



阳信瑞鑫集团有限公司  
Yangxin Ruixin Group Co., Ltd.

地址：山东省滨州市阳信县小桑经贸园区永莘路 1 号  
山东省滨州市阳信县经济开发区工业一路 8 号

电话：0543-8451888

传真：0543-8451388

网址：www.yxruixin.cn

邮箱：rxjt@yxruixin.cn



Address: No. 1, Yongshen Road, Xiaosang Economic and Trade  
Park, Yangxin County, Binzhou City, Shandong Province

No. 8, Industrial Road 1, Economic Development Zone,  
Yangxin County, Binzhou City, Shandong Province

Tel: 0543-8451888

Fax: 0543-8451388

Website: www.yxruixin.cn

Email: rxjt@yxruixin.cn

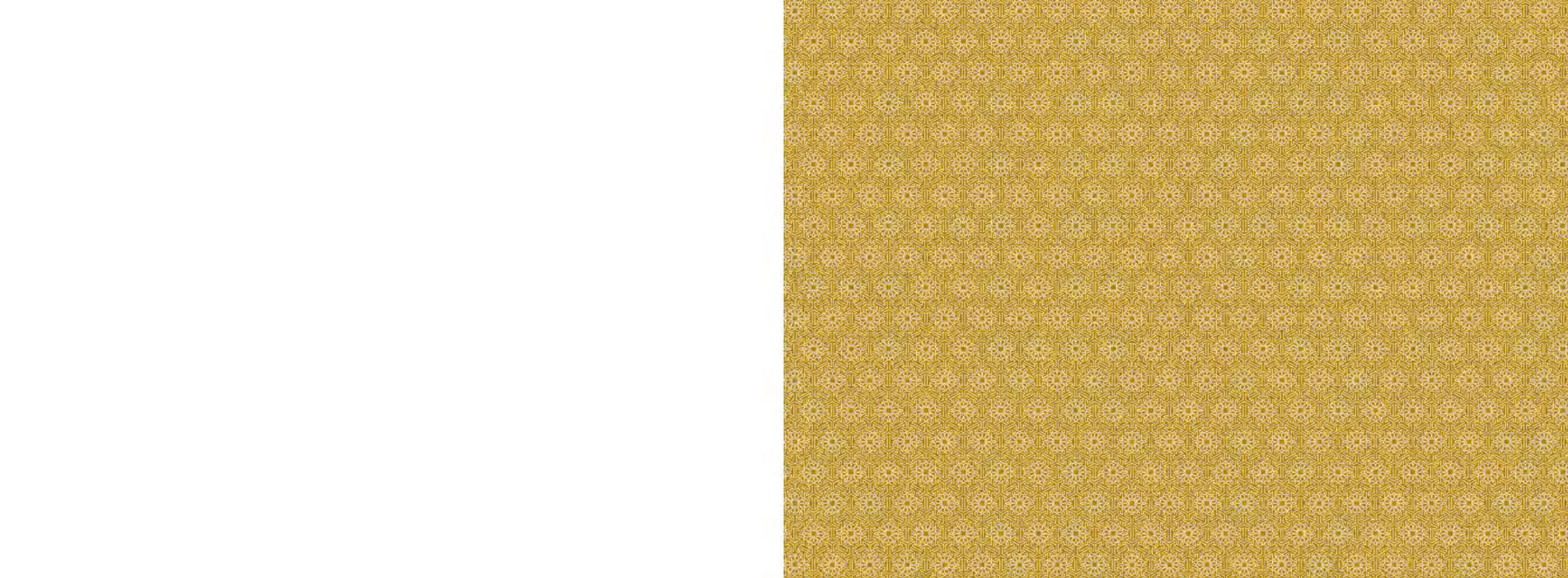


瑞鑫地毯  
Ruixin Carpet

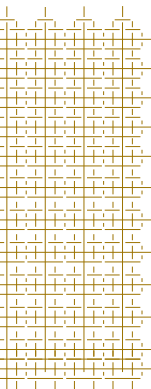
您 稳 定 的 酒 店 地 毯 定 制 专 家  
Your stable hospitality customized carpet experts











## 关于我们 ABOUT US

**阳信瑞鑫集团有限公司**始建于1987年，是一家具有33年高档手工胶背地毯及机织簇绒印花地毯生产历史的企业集团。自1998年以来与美国诺瑞地毯集团多次合资合作，拥有阳信瑞鑫毛制品有限公司、阳信诺瑞织品有限公司等7家子公司，总资产6.8亿元。瑞鑫集团下设瑞鑫工业园、诺瑞工业园2个地毯工业园区。其中瑞鑫工业园主要从事手工簇绒地毯以及地毯染纱、织布等配套产品的生产制作；诺瑞工业园包含机织簇绒、印花地毯以及纺纱、抽丝等产品的生产制作。

瑞鑫集团致力于与供应商、经销商、终端客户建立相互沟通、全面合作、实现“长期、稳定、共赢”的战略合作伙伴关系，销售网络辐射国内所有大中城市以及美国、澳大利亚、新西兰、欧洲、东南亚等国家和地区，是美国“诺瑞”国际知名品牌的主要地毯供应商。

作为手工枪刺地毯和机织印花地毯的主要生产企业，瑞鑫以其设计质量、品种范围以及公司向业界提供的各种产品的持续创新性而获得认可。目前瑞鑫将其数十年卓越的设计重点转向商业酒店并打造出了世界知名的瑞鑫品牌。我们独特的地毯是用最高档的材料编织，特别是用我们独特的技术染色，织造出一种精美绝伦的豪华外观。瑞鑫品牌地毯广泛用于世界一流的酒店、历史古迹、度假村、宴会厅、乡村俱乐部、邮轮、办公室等高端场所。瑞鑫品牌创立于1998年，被评为“山东省著名商标”“中国驰名商标”，产品已进入人民大会堂、周恩来纪念馆、建国70周年展览馆、G20峰会、上海世博会以及万达集团、恒大集团、融创集团旗下五星级、七星级酒店；还进入了美国白宫、特朗普大厦等国内外最高端会议中心、酒店。产品销售收入和市场占有率在业内排名位居前列，成为国内质量领先、规模最大的地毯专业生产企业。



**YANGXIN RUIXIN GROUP CO., LTD** founded in 1987, has been engaged in producing hand&machine tufted high level carpet for 33 years . In the year of 1998,Ruixin had a joint ventures with the U.S Nourison Inc ,now he has 7 subsidiaries such as Yangxin Ruixin Wool Products Co., Ltd., Yangxin Nourison Textile Co., Ltd. with total assets of 680 million yuan. Ruixin Group has two carpet industrial parks, one is Ruixin Industrial Park where hand tufted carpet and yarn dyeing as well as cotton backing produced,the other one is Nouri Industrial Park where have the production of mahine tufting,3D printing wool spinning as well as yarn extruding.

Ruixin Group is committed to establish mutual communication and comprehensive cooperation with suppliers, dealers and end customers to achieve a "long-term, stable and win-win" strategic partnership. The sales network radiates all large and medium-sized cities in China , United States, Australia, New Zealand, Europe, Southeast Asia and other countries and regions, It is the main carpet supplier of the world famous brand Nourison in the United States.

As a leading source of producing hand&machine tufted, printing carpets, Ruixin is recognized for its quality and the various range products as well as its continuous innovation on the designs. Currently Ruixin has turned its dedicated experience to focus on the residencial&hospitality for providing high quality wall to wall carpets and residential rugs for some high-end commercial markets, setting up new standards in luxury and fashion. Our unique rugs are tufted with the highest quality materials, especially dyed with some unique technology to create an incomparable luxurious look. Ruixin carpet have been used in the world-class hotels, historic sites, resorts, banquet halls, country clubs, cruise ships, offices and corporate interiors etc. Ruixin brand founded in 1998, was awarded "Shandong Province famous trademark" "China Famous trademark". and entered into the Great Hall of the People, Zhou Enlai Memorial Hall, 70th anniversary exhibition Hall, G20 Summit, Shanghai World Expo and five&seven-star hotels under Wanda Group, Evergrande Group and Sunac Group; It has also entered into some most high-end conference centers and hotels at home and abroad such as the White House and Trump Tower, and the product sales revenue and market share rank in the forefront of the same line which are becoming the leading carpet manufacturer with the largest scale in China.



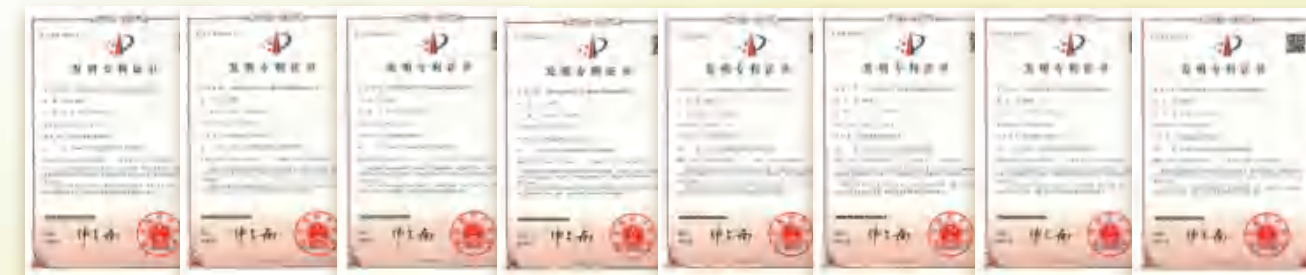


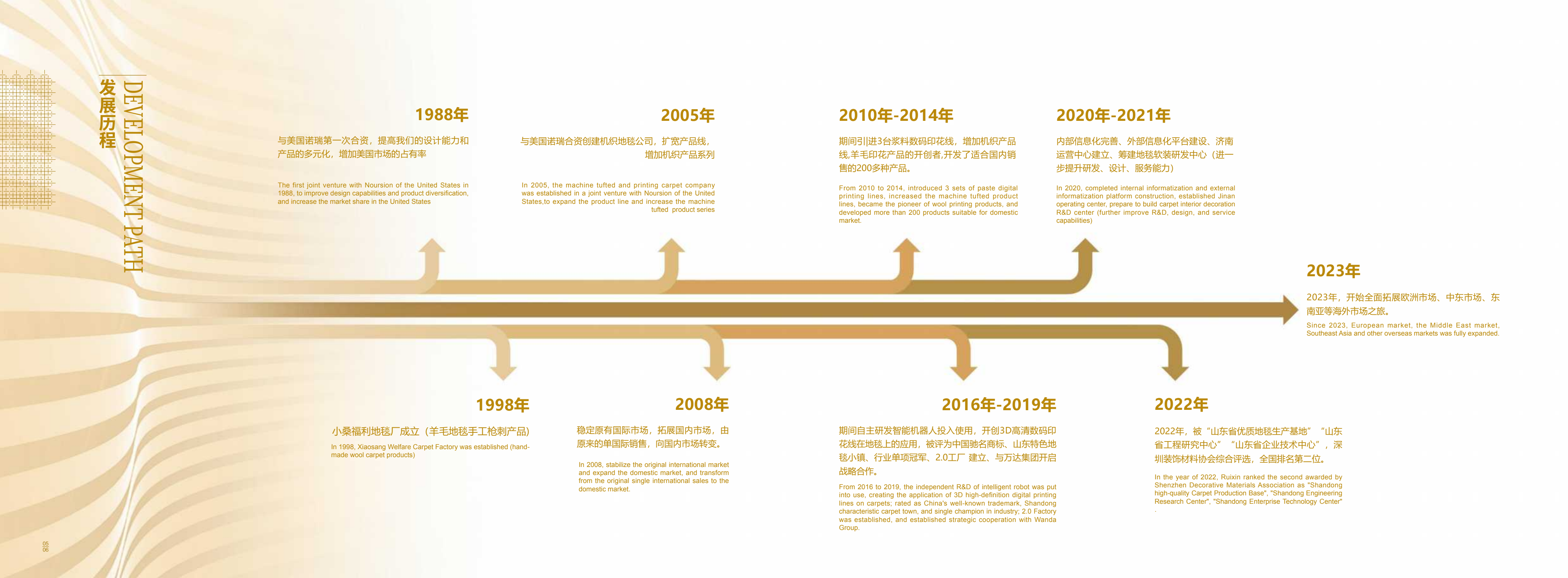
瑞鑫集团现有专利**156**项，其中授权发明专利**6**项，授权实用新型专利**57**项，受理发明专利**34**项，受理实用新型专利**58**项，参与制定国际专利**1**项。

瑞鑫地毯获得了由国际公认的环境机构和组织颁发的必要的生产认证和标签。

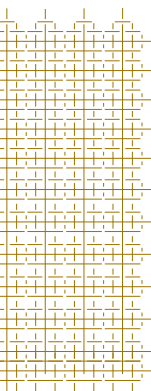
Ruixin Group has 156 patents, including 6 authorized invention patents, 57 authorized utility model patents, 34 authorized invention patents, 58 utility model patents, and participation the formulation of 1 international patent.

Ruixin Carpet was awarded the necessary production Certification and Labels by internationally recognized Environmental Institutions & organizations.









## R&D CENTER 研发中心

### 创新 Innovation

我们意识到，今天新的东西明天可能就过时了。瑞鑫公司的理念鼓励所有部门不断寻找更好的方法来服务我们的客户和环境。

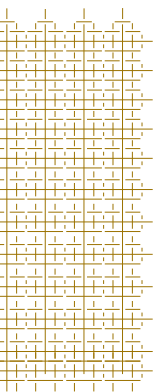
我们知道，为了确保可持续的未来，必须走在纺织业创新的前沿。

We are aware that what is new today may be outdated tomorrow. RuiXin company philosophy encourages all departments to constantly be on the lookout for better ways to serve our customers and the environment.

We know that to ensure a sustainable future, it must be at the forefront of the innovation in textiles industry.







## MATERIALS PURCHASING 原材料采购

我们对产品的各项原材料的采购进行了严格的把控，在购买之前及对材料的一致性、质量、耐久性、价值等进行测试评估，各项指标完全达标才能购买入库。

We have been strictly controlling the source of various raw materials before going into the warehouse, all indexes such as consistency, quality, durability and value of materials have to pass the standard test and evaluation.



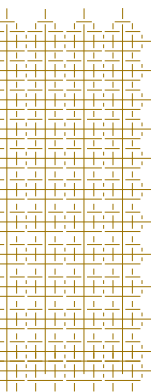
## SPINNING 纺纱

我们选用的是优质的新西兰羊毛用于我们的纱线，对纱线的纺织过程严格把控，因此我们的纱线具有良好的外观和持久的耐用性，满足您对地毯的选用要求。

We have been applying high quality New Zealand wool to the carpet with strictly controlled during the spinning process, which can make sure the carpet to have a good appearance and long-lasting durability to meet your requirements .



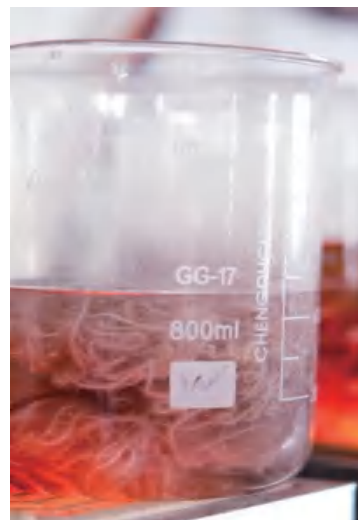




## 染色 DYEING YARN

我们使用先进的染色设备和技术，为您提供任何颜色，满足您的设计需求。我们的技术人员是艺术家，他们不断进行测试，以确保您的颜色将是一致和准确的，并保证优良的颜色牢度。

We have advanced dyeing equipment and technology to dye any yarn to be colorful to meet your design needs. Our technicians are artists who can constantly carry out the tests to ensure the colours to be consistent, accurate and excellent on colour fastness.



## 织造 TUFTING

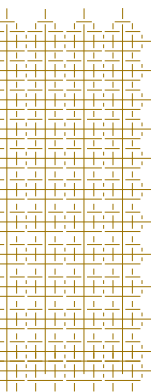
### 手工+超高清印花 Hand Tufted & Ultra High Definition Printing

我们的织工都是干了好多年的艺术家，他们通过自己手中的电枪灵活地刺绣，织造出各种不同的花纹图案和高低错落的地毯，让您的家居生活充满活力并带来美的享受。

Our workers are specialized in tufting for many years who all are artists to make their works to look vibrant and artistic by using the tufting guns flexibility. Weaving a variety of different patterns and high and low scattered carpet to dedicate your home life with full of vitality and bring beautiful enjoyment.







## 后整 FINISHING

通过使用手工雕刻和修整平毛程序，地毯的设计变得栩栩如生，具有丰富的立体浮雕效果和无与伦比的美感，我们创造的地毯已经变成一件艺术品。

Hand sculpting and trimming procedures make the carpet to be more lively with three-dimensional relief effects and unparalleled beauty, the carpet we created has been transformed into an artwork.



## 质量保证 QUALITY ASSURANCE

我们实行质量控制，从设计过程开始，一直到最终交付。我们认真对待我们的每一个环节的检验检查，确保交给我们的客户最好的产品。

We practice quality control from the beginning of the design created to the final delivery. We take the inspection of every steps seriously to ensure to deliver the best products to our customers.



颜色对比 color checking with the Pantone



色牢度检测 color fasten test



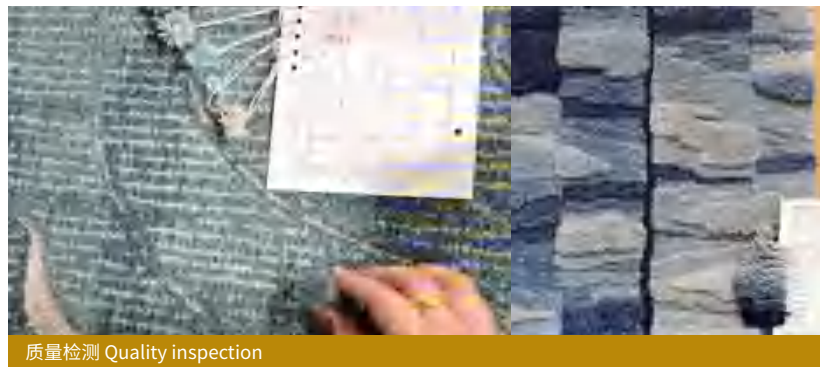
纱线对比 checking the dyed yarn with POM



样品对比 sample comparison



产品对样 production comparison



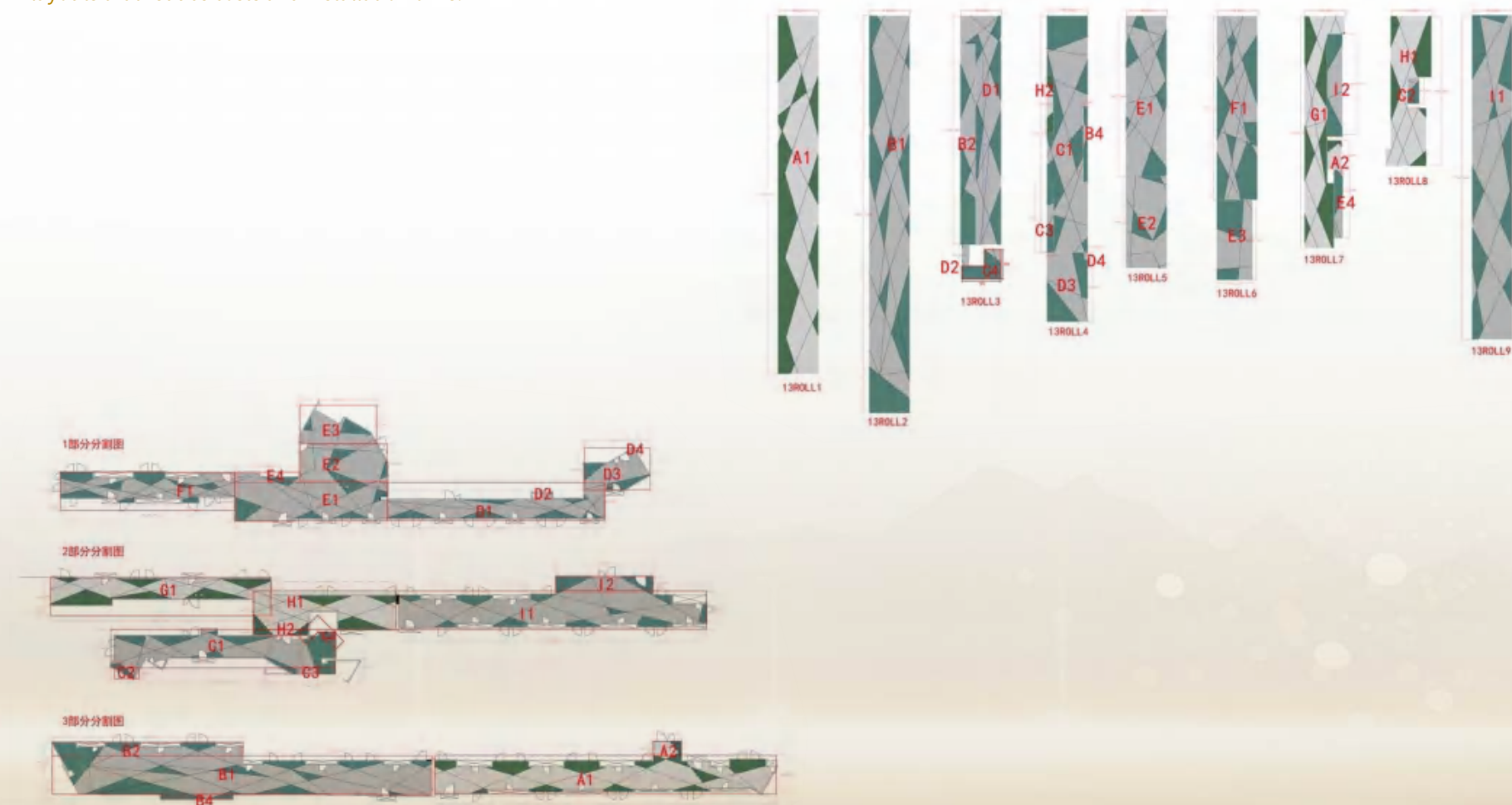
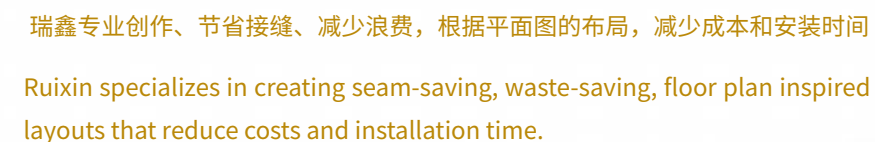
质量检测 Quality inspection



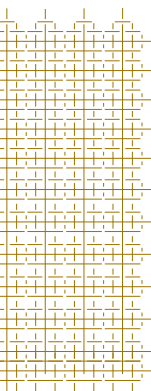
Specialized machine tufted and advanced  
over-tufted and ultra high definition printing  
**专业化机器簇绒和高级簇绒提花和超高清印花**

Finely crafted customized hand-tufted  
精心制作的定制手工枪刺

## Design capabilities and design gallery







项目展示  
TYPICAL DEMONSTRATION

TRUMP TOWER  
特朗普大厦

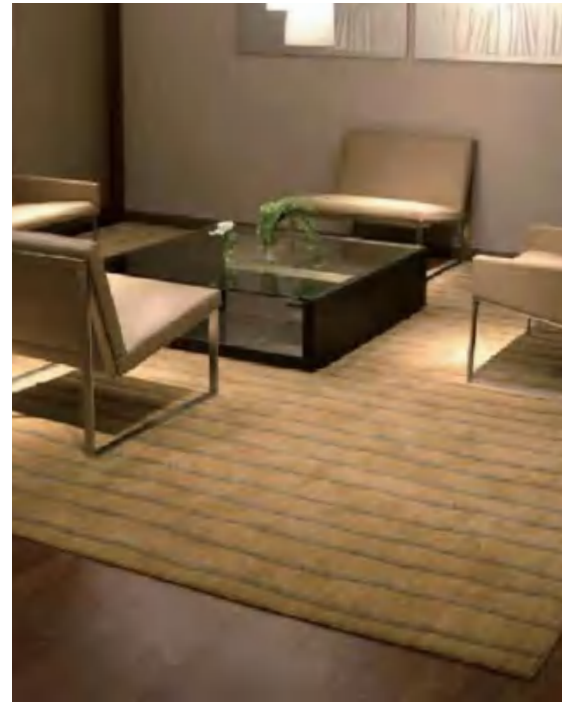


Hotel Schweizerhof  
施韦泽霍夫酒店

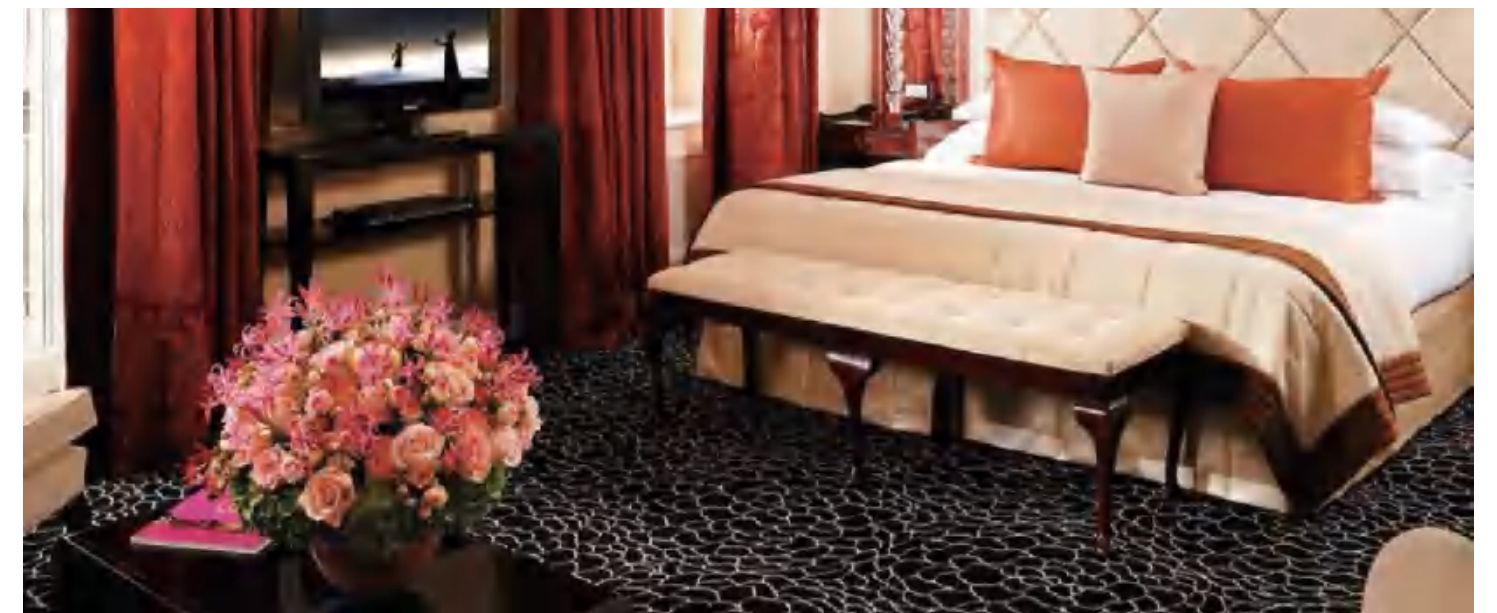




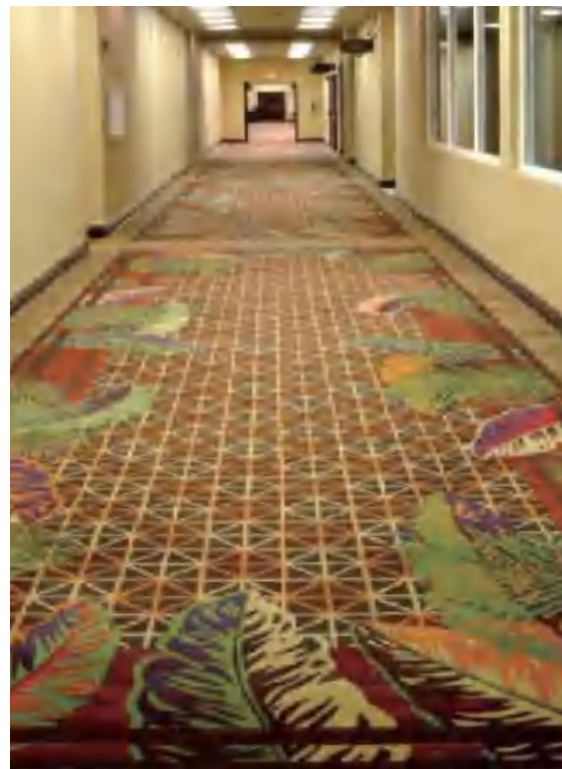
75 Wall Street  
& Andaz Hotel  
华尔街75号&安达仕酒店



Baur au Lac Hotel,  
Zurich  
苏黎世-博拉湖酒店







King`s Point,  
Florida  
佛罗里达-国王角



Treasure Island Marriott  
Residence Inn, Florida  
金银岛万豪酒店, 佛罗里达

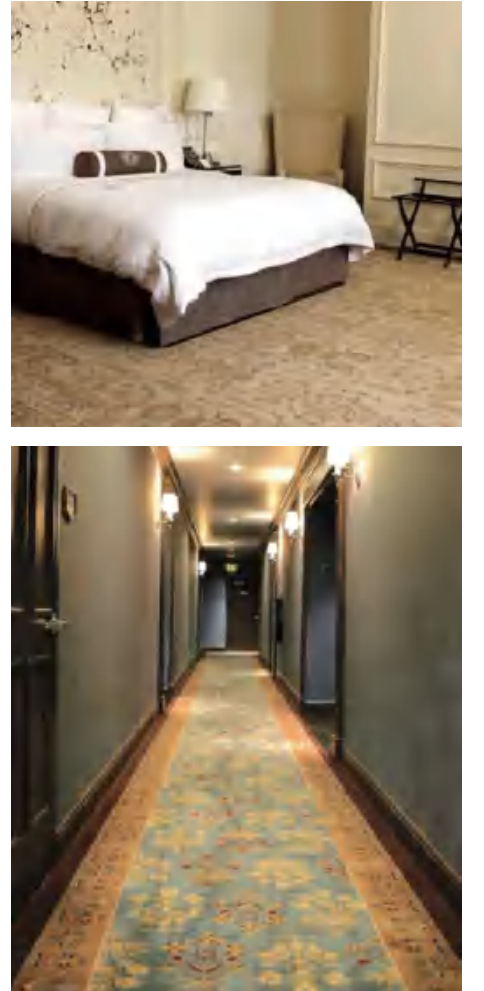




The Latham Hotel  
莱瑟姆酒店

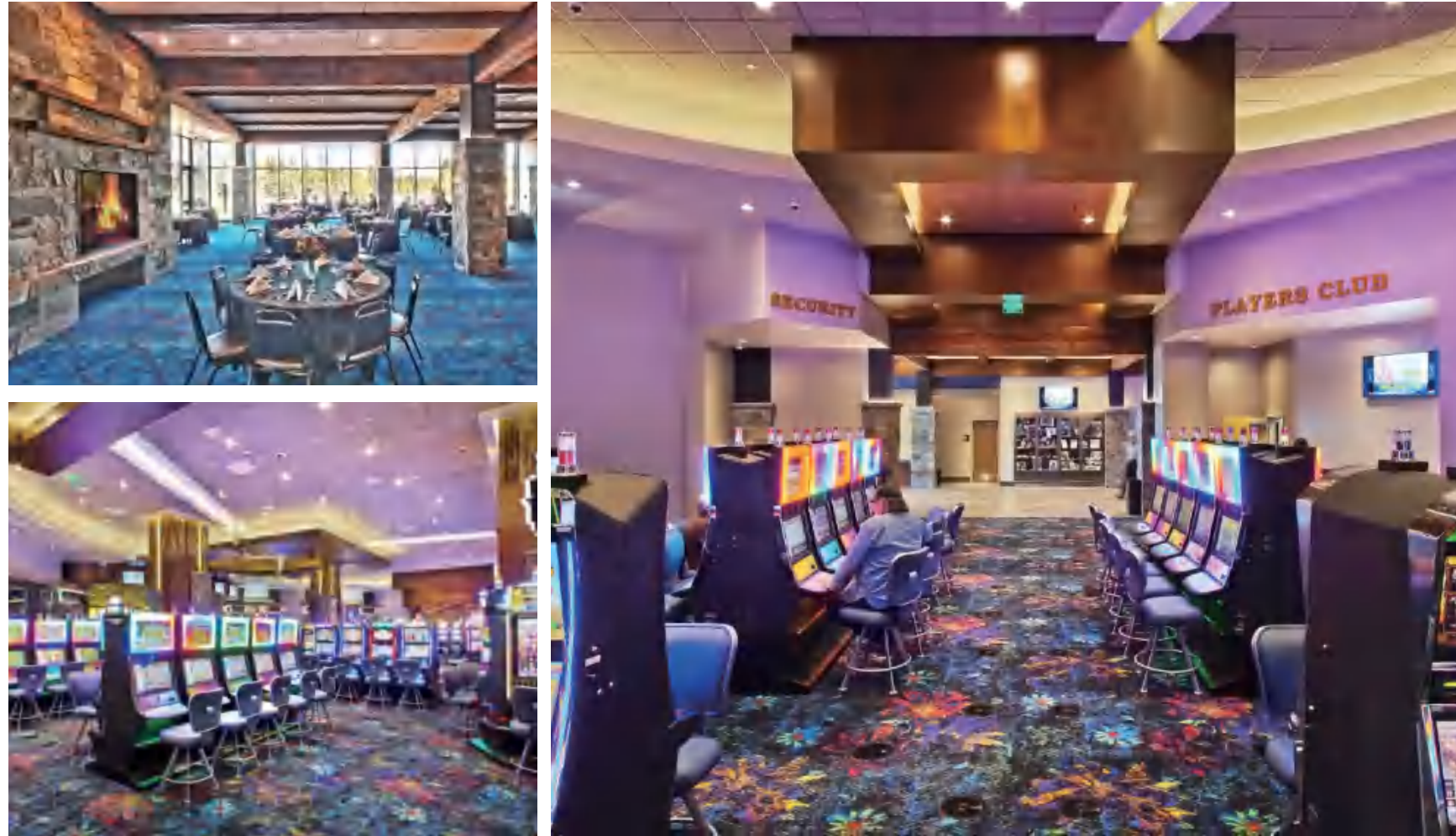


U.S. Grant Hotel, San Diego,  
California  
美国格兰特酒店，加利福尼亚州圣地亚哥





Montana Gray Wolf Peak  
Casino  
蒙大拿州灰狼峰赌场

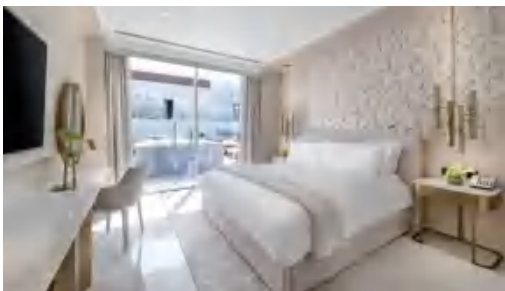
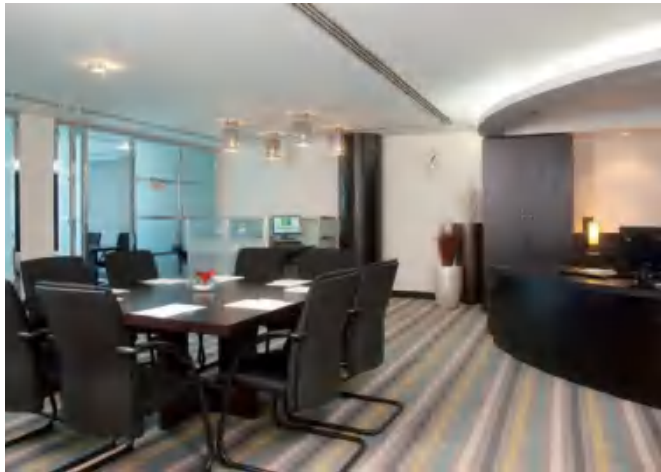


TAJ Exotica – Palm Jumeirah,  
Dubai  
迪拜泰姬异域度假村





Five Palm Jumeirah Dubai  
迪拜五号朱美拉棕榈酒店





Union University, Luzern,  
Switzerland  
瑞士卢塞恩联合大学



Restaurant in the  
Beau Rivage Hotel,  
Neuchatel,  
Switzerland  
瑞士纳沙泰尔  
BEAU RIVAGE酒店餐厅



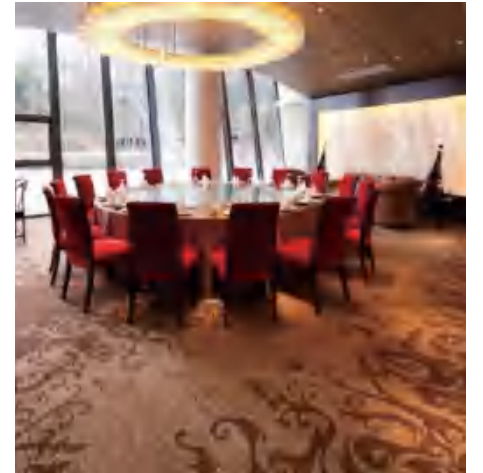
St. Regis Hotel,  
New York, NY  
纽约-圣瑞吉酒店



Waldorf  
-Astoria Shanghai  
上海华尔道夫酒店



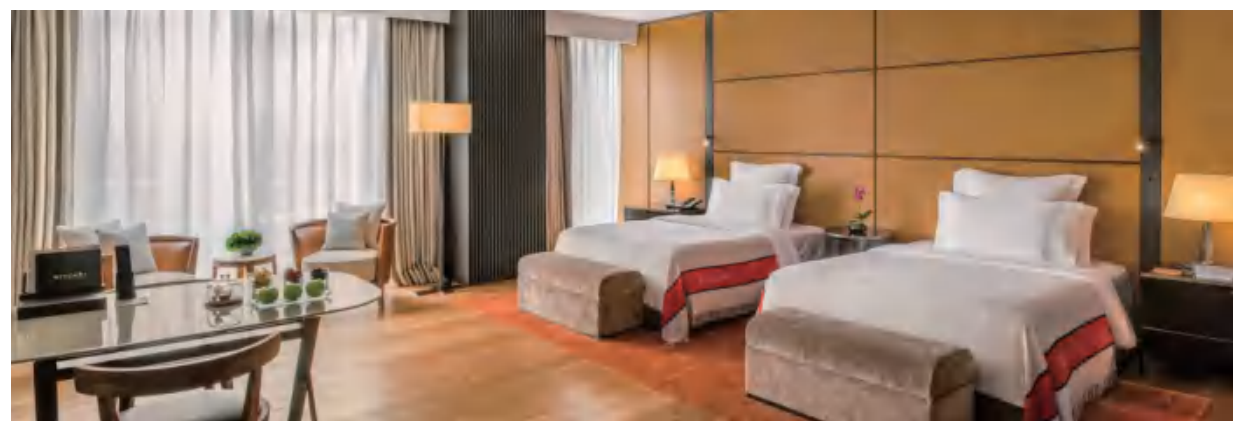
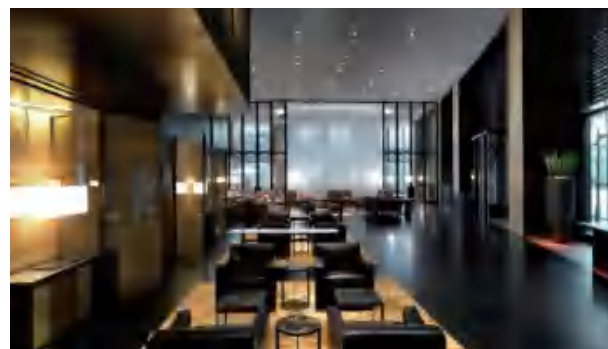
Shanghai Sheshan International  
Conference Center, China  
中国上海佘山国际会议中心



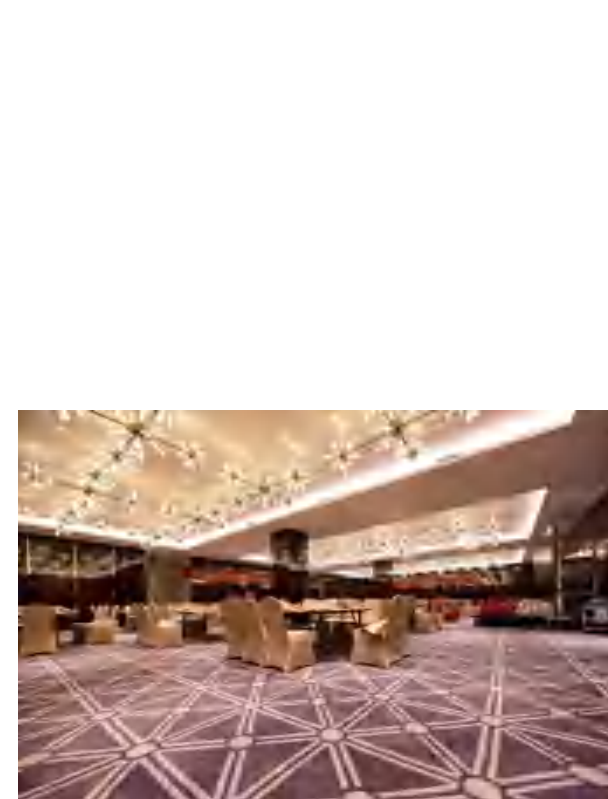




北京宝格丽酒店  
Beijing Bulgari Hotel



杭州温德姆至尊豪廷大酒店  
Hangzhou Wyndham Supreme Court Hotel



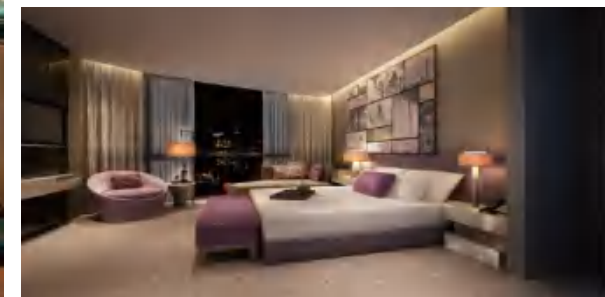
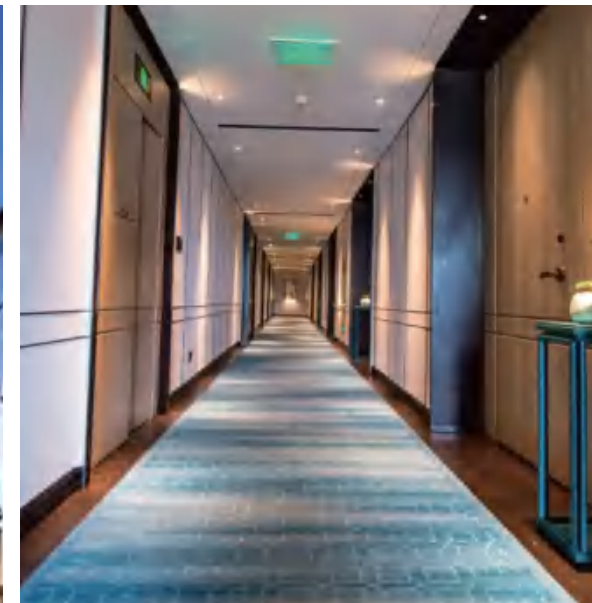




**龙光地产南宁豪华精选酒店**  
Longguang Real Estate Nanning  
Luxury Collection Hotel



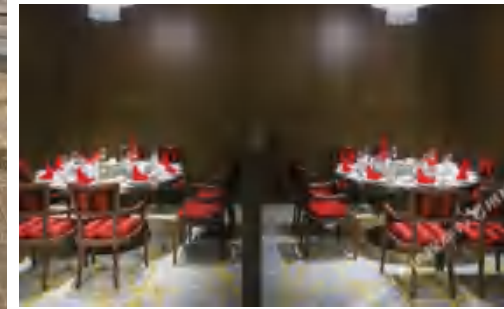
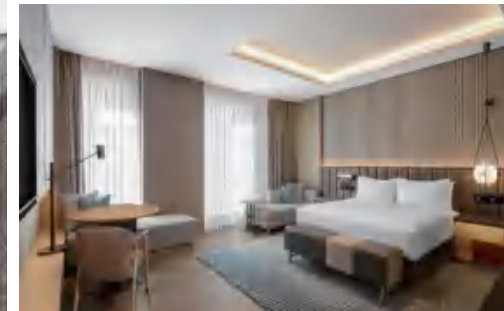
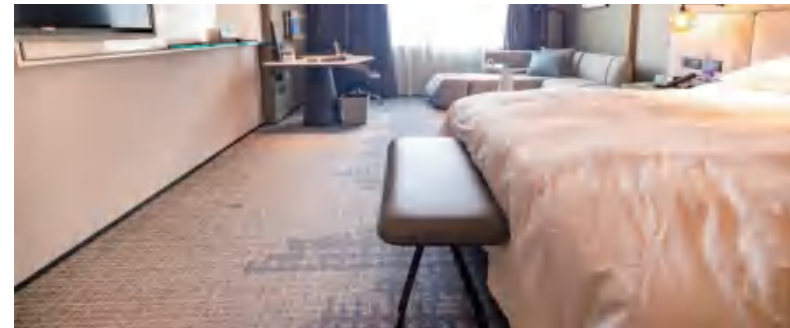
**苏州柏悦酒店**  
Suzhou Baiyue Hotel







深圳皇冠假日酒店  
Crowne Plaza Shenzhen



山西万豪酒店  
Shanxi Marriott Hotel





G20 2016 CHINA  
**杭州G20峰会**  
 Hangzhou G20 Summit

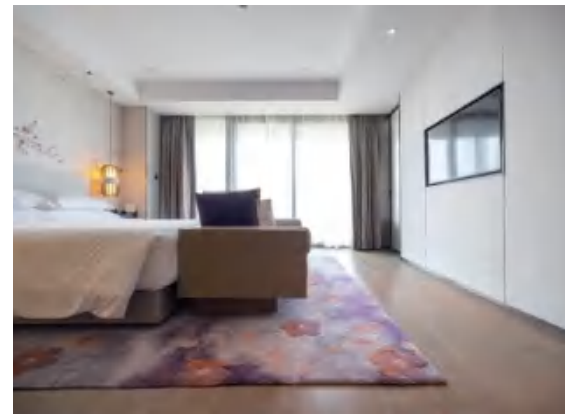
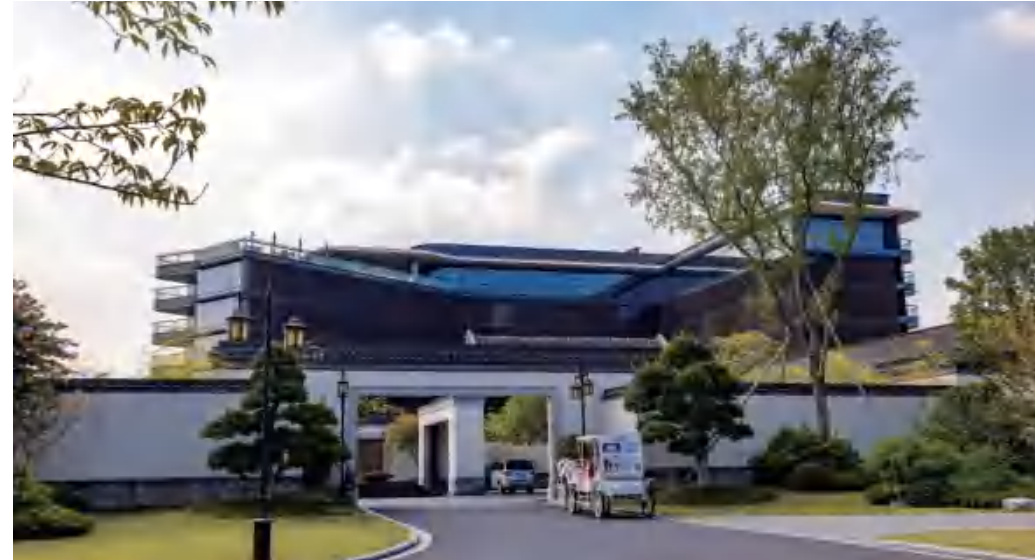


JW MARRIOTT  
**杭州JW万豪酒店（逍遥庄园）**  
 JW Marriott Hotel Hangzhou (Leisure Manor)

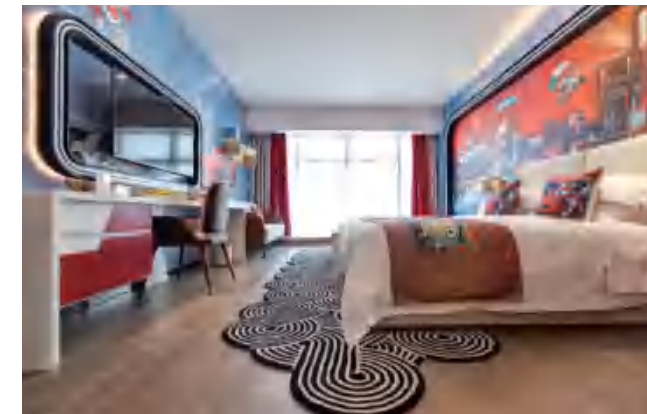




湖州桃花源悦榕庄酒店  
Huzhou Taohuayuan Hotel



南浔广弘华美达广场酒店  
Ramada Plaza Nanxun Guanghong Hotel

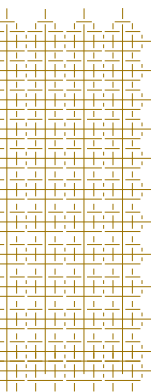




万达瑞华酒店  
Wanda Reign Hotel



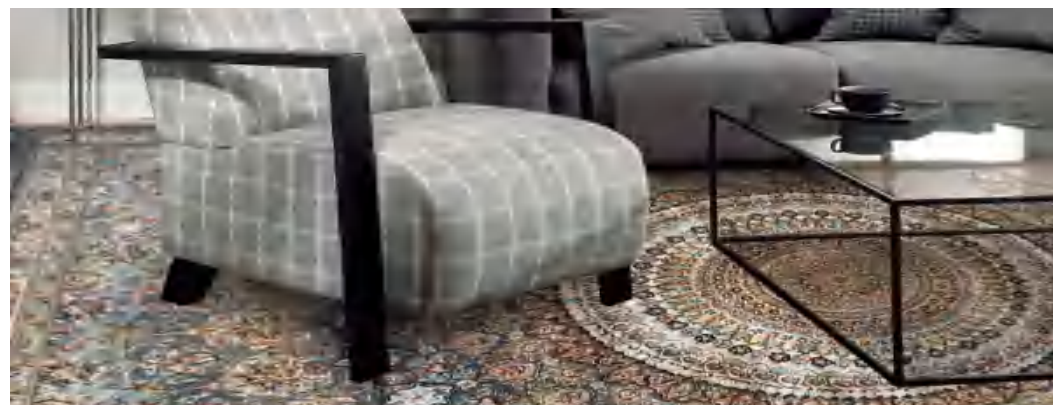




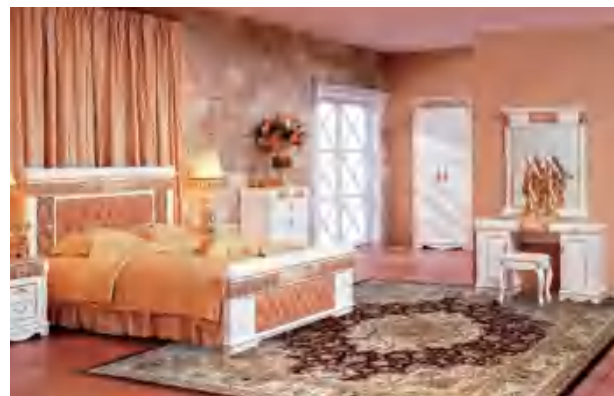
PERSIAN RUG  
波斯地毯



160L YX386G/T245 7.75×9.75



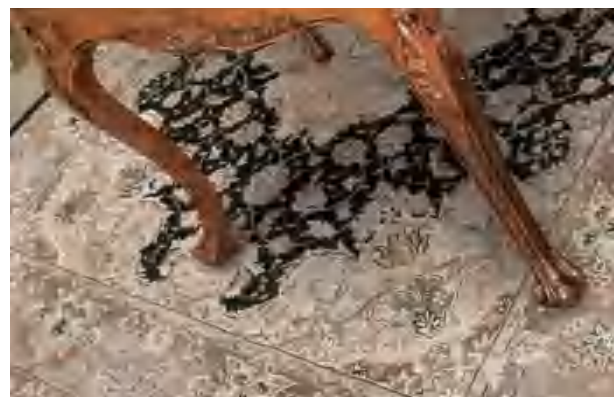
160L YX386F BLUE 7.75×9.75



160L YX245/379 7.75×9.75



160L YX245/329 6.56×9.84



160L YX245B 320/T379 7.75×9.75



160L YX245A T245 7.75×9.75







160L YX394B MTC 7.75×9.75



160L YX398C/NG24 7.75×9.75

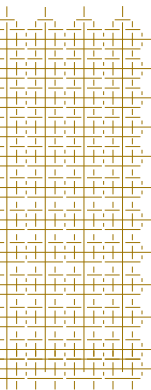


160L YX420 DA01 HE090 7.75×9.75



160L YX398B/NJ10 7.75×9.75





## SOME CASES

### 部分项目名称

North America	Asia
City of Atherton, Atherton, CA	Dalian Sweetland Hotel, Beijing, China
Cupertino Inn, Cupertino, CA	Double Tree by Hilton, Beijing, China
Keating Hotel, San Diego, CA	The Great Wall Sheraton Hotel, Beijing, China
La Valencia Hotel, La Jolla, CA	Holiday Inn Crowne Plaza Hotel, Chengdu, China
Rancho Valencia, San Diego, CA	International Holiday Conference Center, Chengdu, China
U.S. Grant Hotel, San Diego, CA	Chongqing Holiday Hotel, Chongqing, China
CordeValle, San Martin, CA	Chongqing Rose Plaza Hotel, Chongqing, China
Hotel Jerome, Aspen, CO	Seagull Hotel, Jinshan, China
Australian Embassy, Washington, DC	Nanjing Intercontinental Hotel, Nanjing, China
Boca Inlet, Boca Raton, FL	Nanjing NOVOTEL Hotel, Nanjing, China
Residence Inn, Treasure Island, FL	Nantong Youfei Hotel, Nantong, China
Portofino South, West Palm Beach, FL	Intercontinental Shanghai, Pudong, China
Wang Center (Performing Arts Center), Boston, MA	Sofitel Accor Hotels & Resorts, Qingdao, China
Hampton Inn, Kansas City, MO	Ruian International Hotel, Ruian, China
Hilton, Albuquerque, NM	Shanghai HongKou Sheraton Hotel, Shanghai, China
Flamingo, Las Vegas, NV	Shanghai Jinyan Club, Shanghai, China
MGM Grand, Las Vegas, NV	Shanghai Sheshan International Conference Center, Shanghai, China
The Garden City Hotel, Garden City, NY	Sofitel Jinjiang Oriental Pudong, Shanghai, China
Glen Head Country Club, Glen Head, NY	The Shanghai Pacific Sheraton Hotel, Shanghai, China
Andaz Hotel, New York, NY	
Claridge's, New York, NY	<b>Asia (continued)</b>
Icahn and Associates Corporate Offices, New York, NY	The Waldorf-Astoria Hotel, Shanghai, China
Rivergate, New York, NY	XiaYangHu Crowne Plaza Hotel, Shanghai, China
St. Regis Hotel, New York, NY	Crowne Plaza Shenyang Parkview, Shenyang, China
The Setai, New York, NY	Longgang Crowne Plaza Hotel, Shenzhen, China
75 Wall Street, New York, NY	Longgang Hilton Hotel, Shenzhen, China
Old Westbury Country Club, Old Westbury, NY	Taihang State Guesthouse, Shijiazhuang, China
Latham Hotel, Philadelphia, PA	Samsara Hotels, Sichuan, China
The Inn at Palmetto Bluff, Bluffton, SC	Yunhai Sheraton Hotel, Xi'an, China
Grand Dunes, Myrtle Beach, SC	International Conference Hotel Center, Yinchuan, China
Texas State Capitol, Austin, TX	
Milwaukee Athletic Club, Milwaukee, WI	<b>Africa and the Middle East</b>
Greenbriar Country Club, Chesapeake, WV	Dubai Marine, Dubai
Courtyard by Marriott, Ottawa, ON	Al Barsha Resort, Dubai
	TAJ Exotica - Palm Jumeirah, Dubai
	Five Palm Jumeirah, Dubai
	Al Rashid Mall, Saudi Arabia
	Al-Yamama, Saudi Arabia

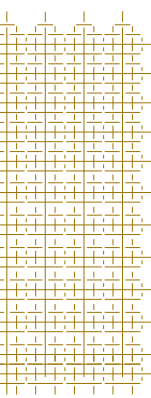
Europe
Golf Club and Resort, Grasse, France
Hotel Merano, Italy
Royal Casino Spa & Hotel Resort, Riga, Latvia
Hotel Alpina & Savoy, Crans Montana, Switzerland
Hotel Kempinski, Geneva, Switzerland
Hotel Métropole, Genève, Switzerland
Hotel de la Reserve, Genève, Switzerland
Hotel Starling, Genève, Switzerland
Restaurant Parc des Eaux-Vives, Genève, Switzerland
Hotel d'Angleterre, Lausanne, Switzerland
Beau Rivage Palace, Lausanne, Switzerland
Hotel Astoria, Luzern, Switzerland
Luzern Palace, Luzern, Switzerland
Palafitte, Neuchatel, Switzerland
Bella Tola, St. Luc, Switzerland
Hotel Des Troi Courone, Vevey, Switzerland
Chalet Royalp Hotel & Spa, Villars, Switzerland
Hotel Monte Rosa, Zermatt, Switzerland
Mont Servants Palace, Zermatt, Switzerland
Riffelalp Resort, Zermatt, Switzerland
Zermatt Palace, Seiler Group, Zermatt, Switzerland
Baur Au Lac, Zurich, Switzerland
Hotel Whatley Manor, United Kingdom
Hotel Beau Rivage, Neuchatel, Switzerland
Cesar Ritz Colleges, Le Bouveret, Switzerland
Eurotel, Neuchatel, Switzerland
Hotel Mont Blanc, leysen, Switzerland
Union Hotel, Luzern, Switzerland
Golf Resort, La Gruyere, Switzerland
Grand Hotel Du Lac, Vevey Switzerland
Bank Safra Geneva, Switzerland
Hotel Villa Honegg, Ennetbürgen, Switzerland
Hotel Prince De Galles, Paris
Lausanne Palace & SPA, Lausanne, Switzerland
Hotel Kempinski, Budapest, Hungary
Hotel Regent Esplanade, Zagreb, Croatia
Les Sources des Alpes Hotel, Loèche-les-Bains, Switzerland
Hotel Schweizerhof, Bern, Switzerland
TSR Swiss Television, Geneva, Switzerland

## SOME PARTNERS

### 部分合作伙伴

工程合作伙伴 Business partner
    
   
      
     
      
供应商合作伙伴 Supplier partner
    
   





## ENVIRONMENT SUSTAINABILITY

### 环保可持续性

作为一家工厂，我们认真对待我们周围的环境，这是我们应该做的事，可持续发展的整个概念意味着我们不会为了制造今天的产品而牺牲未来。为此，我们的工艺充分利用可回收和可再生的原材料。

我们生产的地毯严格满足CRI的绿色标签计划，这使我们能够创建一个安全的室内环境，人们的健康是我们的首要任务。

As a manufacture, we take our environmental responsibility seriously. this is the right thing we must to do, and the whole concept of sustainability means that we don't sacrifice the future to make today's products. At this point, our processes make full use of recycled and renewable raw materials .

Our products strictly meet CRI's Green Label program. This allows us to create a safe indoor environment where people's health is our top priority.



## OUR PURPOSE

### 我们的宗旨

我们的纱线染色设施是最先进的，每公斤染色纱线的用水量是最低的，我们还投资建造了一个大型废水处理厂以改善我们工厂排放的废水的质量，大部分生产废物的回收方法都符合工业标准。我们收集纱线废料和地毯废料，用于一些生产过程的能源生产，对原材料和成品的所有包装材料都使用回收材料；设备和技术升级使得能源节约成为可能，这些措施包括提高所有业务的效率，以更有效地减少浪费。我们使用最节能的纺纱、染色和其他高性能纺织设备；我们以各种方式与当地慈善机构密切合作，员工是我们努力的重点，我们竭尽全力确保我们的设施超过所有安全和健康标准。

Our yarn dyeing facilities are the most advanced with the lowest water usage per kilogram of dyed yarn. We have also invested in a large wastewater treatment plant to improve the quality of the wastewater discharged from our plant . Most of the recycling methods we use to produce waste are industry standard. We collect wasted yarn and carpet for energy production in some production processes. We use recycled materials for all the package for finishing products . Equipment and technology upgrades make energy conservation possible. These include improving efficiency across all operations to reduce waste more effectively. We use the most energy efficient spinning, dyeing and other high performance textile equipment and work closely with local charities in a variety of ways to benefit our employees to ensure our facilities exceeding all safety and health standards.

