



HIDAYATH
METAL INDUSTRY

OVER 40 YEARS OF INNOVATION

in Stainless Steel & Allied Metals for Architectural Application



www.saudihidayath.com

Chairman’s Message

Group Profile

History & Milestones

Mission & Vision

Our Business

Organizational Chart

Architectural

Architectural Manufacturing

Architectural Finishes

Expanded Metal

Wire Mesh

Tac Tiles

Applications

Pipes and Tubes

Handrail Fittings

Glass Fittings

Bathroom Equipment

High-Security Furniture

Bollards

Metal Doors

Gratings & Channels

Cladding Panels

Flag Posts

Material Supplies

Long Products

Flat Products

Chemicals & Accessories

Welding Consumables

Key Projects

Page | 05

Page | 07

Page | 08

Page | 10

Page | 11

Page | 12

Page | 16

Page | 18

Page | 34

Page | 36

Page | 38

Page | 40

Page | 42

Page | 46

Page | 50

Page | 54

Page | 58

Page | 62

Page | 63

Page | 64

Page | 66

Page | 67

Page | 68

Page | 69

Page | 70

Page | 72

Page | 73

Page | 74

Services

Cutting & Bending

Robotic Plasma Cutting

Waterjet Cutting

Plasma Cutting

Tube/ Pipe Laser Cutting

Laser Cutting

CNC Punching

Coil To Coil Punching

Coil Cut To Length

Slitting

Plate Rolling

Plate Bending

V Grooving

CNC Lathe

Drilling

Beveling

Page | 80

Page | 80

Page | 81

Page | 81

Page | 82

Page | 82

Page | 83

Page | 83

Page | 84

Page | 84

Page | 85

Page | 85

Page | 86

Page | 86

Page | 87

Surface Treatment

Electropolishing

Thick Plate Polishing

Stainless Steel Pipe Polishing

Anodizing

Pickling

Passivation

PVD Coating

CNC Spinning Lathe

Etching

Embossing

Cold Arc Welding

Bead Finish

Blasting & Painting

Page | 87

Page | 88

Page | 88

Page | 89

Page | 89

Page | 90

Page | 90

Page | 91

Page | 91

Page | 92

Page | 92

Page | 93

Page | 93

Accolades & Appreciations

Page | 94

Quality Policy

Page | 100

HSE Policy

Page | 101

Research & Development

Page | 102

Certifications

Page | 103



Dear Business Partner

As the Hidayath Group approaches its 45th anniversary, we are proud of our dynamic growth in architectural, industrial, and service industry. To achieve this growth, HIDAYATH has capitalized on select opportunities including strategic expansion, several discrete acquisitions and exciting forays into new geographic markets.

Our ambitions are to provide total solutions in stainless steel and allied metals across different industries and services. As part of our ongoing effort to further our presence across the globe, we are tirelessly developing solutions by offering expertise in design and support it with continuous life-cycle services.

Commitment to training our personnel, along with continuously upgrading and modernizing our equipment and methods cements further our relationship with our diverse clientele.

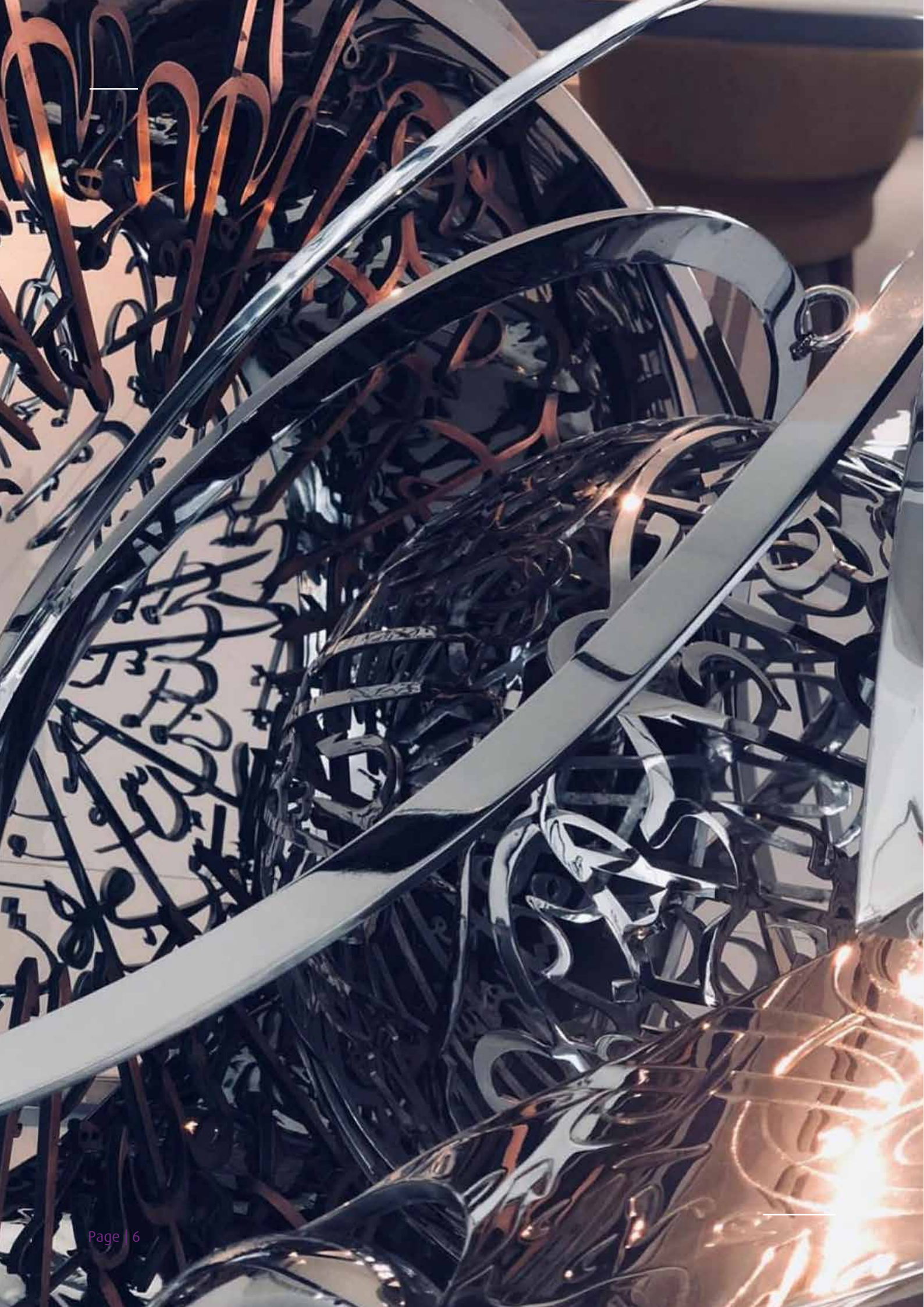
Going forward, as a business partner, our commitment is that HIDAYATH Group of Companies will continue to strengthen its position as the premier solution provider in the existing markets and beyond.

We look forward to continuing to serve all your stainless steel and allied metal needs.

Sincerely,

Hidayathulla Abbas

Chairman Hidayath Group



Founded by Hidayathullah Abbas in 1976, Hidayath Group has emerged as a global enterprise providing world-class stainless steel and allied metal products and solutions to Architectural and Industrial sectors.

Headquartered in Dubai, UAE, the group operates in more than twenty countries across five continents, with a mission to achieve global leadership as the complete solution provider in stainless steel and allied metals.

Manufacturing, Material Supplies and Services form the core of Hidayath Group's business that commenced in Abu Dhabi four decades ago and today enjoys an enviable customer base in Architectural and Industrial sectors across all emerging markets world wide.

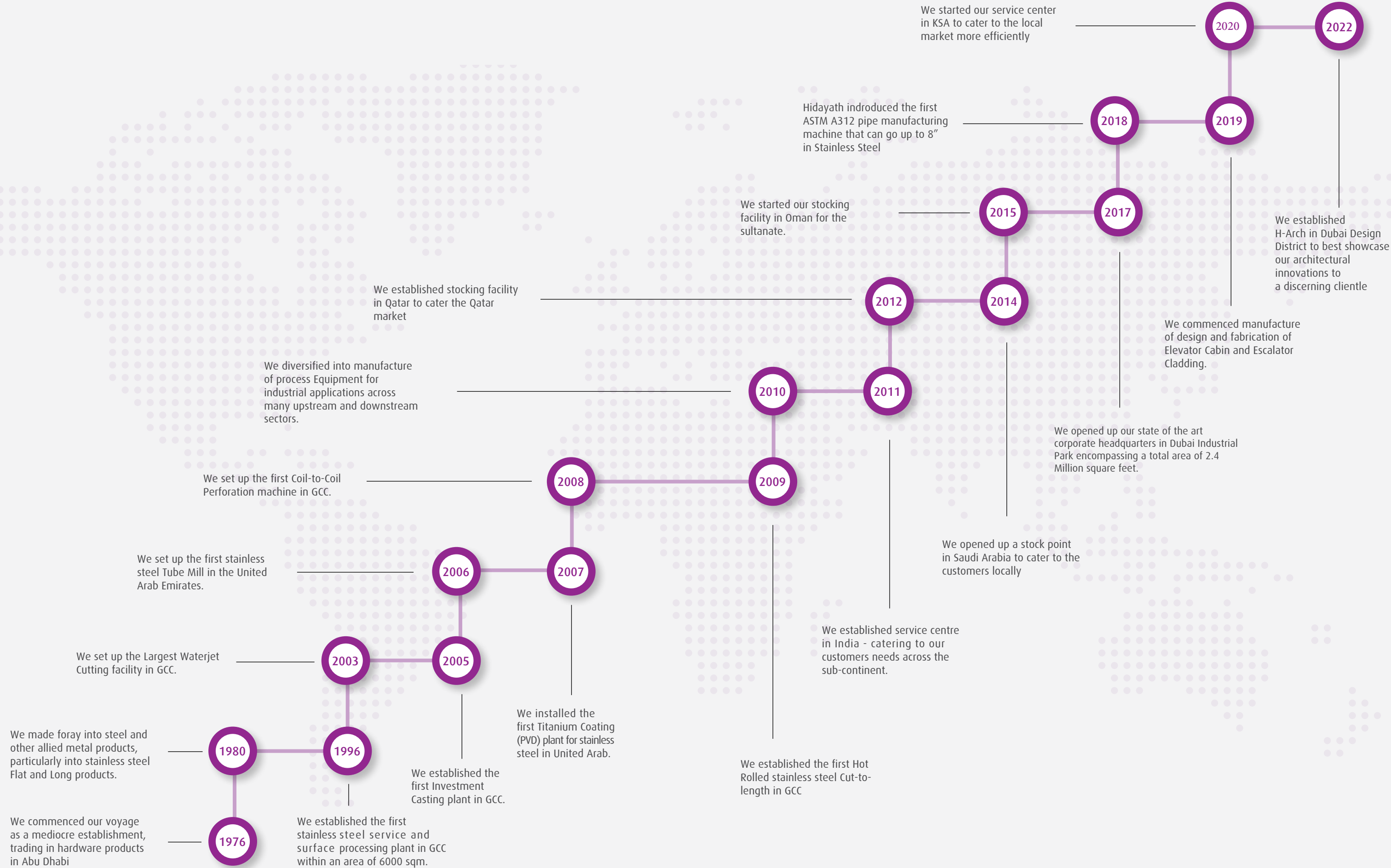
Our pragmatic growth is an attribute to our able leadership and a dedicated work force which understands and complies with the group initiatives and underlined objectives.

Going forward, the group continues to invest in training its personnel, technologically advanced machinery, strategic acquisitions and well planned forays into new markets. Our Architectural line of business primarily focuses on manufacturing and supplies of world class architectural products and solutions in stainless steel and other allied metals. We pride ourselves in being pioneers in the manufacturer of stainless Handrail Equipment and Glass Fittings under our brand name **H-Fit** and also produce custom Bathroom Equipment and Accessories under brand name **H-bath**, apart from being one of the largest manufacturers of ornamental Pipes, Tubes & Fittings for architectural applications. We also produce Gratings, Channels, Bollards, Tac Tiles (Long & Round), Metal Doors & Flag Posts in stainless Steel and associated metals.

We procure, stock and supply large inventories in stainless steel finished and semi-finished long, Flat and Tubular products for architectural applications in addition to a wide array of surface treatment essentials.

- In Longs, we supply Angles, U-Channels, Round, Square and Flat Bars.
- In Flats, we supply Sheets, Plates and Coils.
- In Tubulars, we supply pipes, Tubes with Groove and Fittings.
- In Surface Treatment chemicals, we supply cleaning essentials and Abrasives.

HISTORY & MILESTONES



Mission

To be “the Complete Solution Provider” in Stainless steel and allied metals to Architectural and Industrial sectors across Middle East, South East Asia, Africa and CIS Countries.

To develop solutions by offering expertise and support it with continuous life-cycle services

Commitment to training our personnel, along with continuously upgrading and modernizing our equipment and methods to exceed our clients’ expectations.

As an ISO certified company, we adhere to the most stringent industry standards to ensure unparalleled quality at all levels of operation.

Vision

To be the top performing and most admired company in the Middle East offering complete solutions in stainless steel and allied metals.

We aim to be relied upon as the partner-of-choice by our diverse clientele irrespective of their business magnitude.

Our vision serves as the framework for our road-map and guides every aspect of our business by describing what we need to accomplish in order to continue achieving sustainable, quality growth.



ARCHITECTURAL

Our Architectural line of business primarily focuses on manufacturing and supplies of world class architectural products and solutions in high quality AISI 304 and 316 stainless steel and other allied metals.

We pride in being the pioneers in manufacture of stainless steel architectural finishes. We design, manufacture and install stainless steel Handrail Equipment and Glass Fittings under brand name **H-Fit** and produce hi-tech Bathroom Equipment and Accessories under brand name **H-Bath**, apart from being one of the largest manufacturers of ornamental Pipes, Tubes & Fittings for architectural applications. We also produce Gratings, Channels, Bollards, Tac Tiles (Long & Round), Metal Doors & Flag Posts in stainless steel and other associated metals.

We procure, stock and supply largest inventories in stainless steel finished and semi-finished Long, Flat and Tubular Products for architectural applications in addition to a wide array of surface treatment essentials.



Manufacturing

Architectural Finishes
Pipes & Tubes
Handrail & Glass Equipment
Bathroom Equipment
Gratings, Channels & Bollards
High Security Furniture
Metal Doors
Expanded Metal
Wire Mesh



Material Supplies

Long Products
Flat Products
Tubular
Surface Chemicals
4H Chemicals
Abrasives
Tac Tiles
Mosaic
Welding Consumables



Metal Services

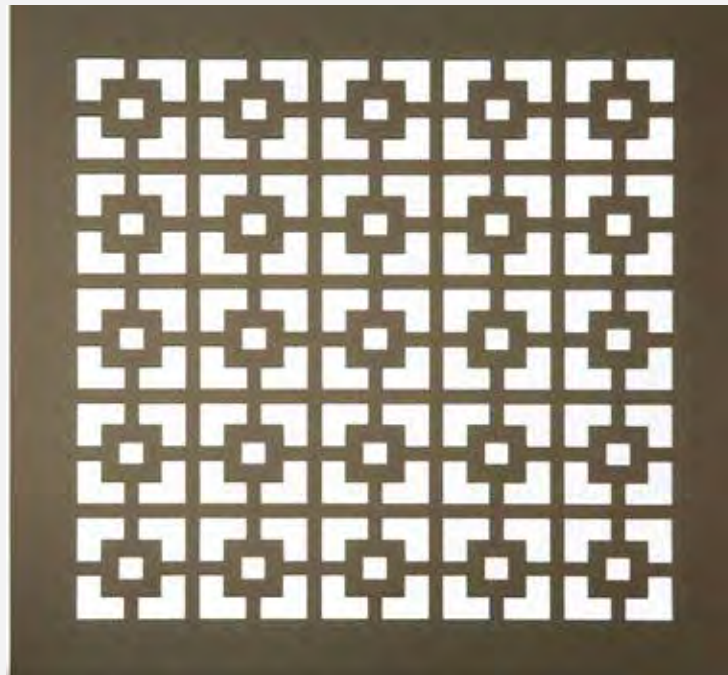
Laser Cutting
Oxy-fuel Cutting
Cut-to length
CNC Perforation
CNC Lathe
Plate Bending
Plate Rolling
Waterjet Cutting
Surface Treatment



ARCHITECTURAL

We are recognised as the complete solution provider in architectural stainless steel and allied metal products and solutions. Our expansive product portfolio consists of finished and semi finished products in any grade and size to cater to customer requirements across any markets. We design, manufacture and supply decorative finishes, structural products, bathroom equipment, handrail and glass fittings and equipment and stainless steel metal surface treatment essentials.

ARCHITECTURAL



Architectural Finishes

Etch Pattern
Emboss
Mirror
Brush
Hairline
Satin
Pearl Bead
Perforation
Vibration
PVD
H3D Patterns
Meshes
Eccentrico
Anti-finger
Antique Metal
Obraz Perforation
Tac Tiles (Long & Round)
Metal Fabric & Expanded Meta



Pipes & Tubes

ASTM A554
Round Profile
Square Profile
Rectangular Profile
Oval Profile
Grooved Profile

ASTM A312
Round Profile



Handrail & Glass Fittings

Connecting
Wall Holding
Ground Holding
End Caps/ Covers
Patch Fittings & Accessories
Shower Hinges
Glass Connector
Pipe Fittings
Glass Holder
Glass Clamps
U-Channels
LIP Seal

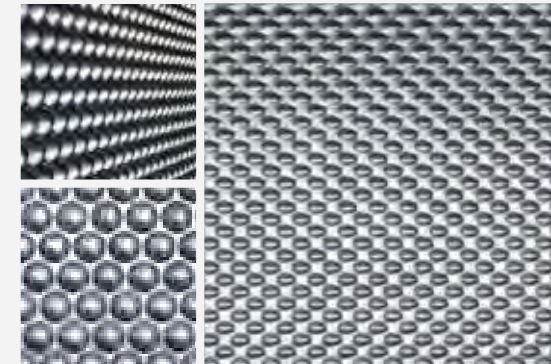


Bathroom Equipment

Bathroom Accessories Collection
Water Screening Elements
Mirrors Collection
Bathroom Equipment for POD
Public Washroom Equipment

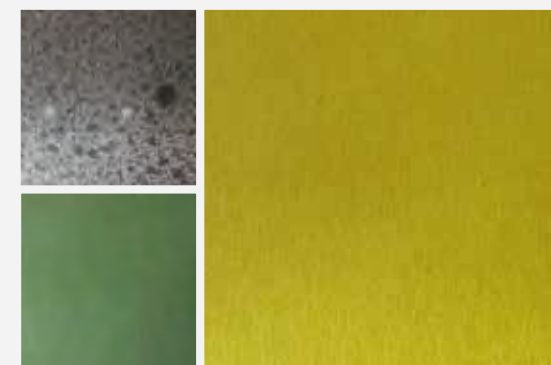
ARCHITECTURAL FINISHES

We pride in being the pioneers in manufacture of stainless steel architectural finishes which include Bead Blast, Brush, Etch Pattern, Emboss, Hairline, Mirror, Marble Design, Perforation, PVD (Mono & Dichromic), Mesh, Expanded Metal, H3D Pattern and Eccentrico.



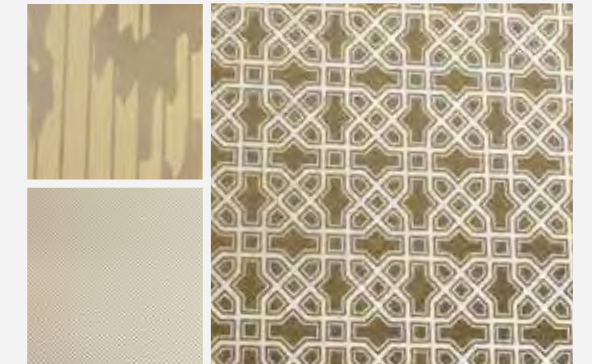
EMBOSS

This process utilizes heavy duty patterned rolls through which sheets are passed and imprinted with the same design as the rolls. Pressure, speed and material thickness are to be considered in this process. It is advisable to keep the thickness as low as possible in order to achieve maximum depth of pattern on the sheets. Embossed sheets tend to show an increase in strength and is anti vandal.



Antique Metal Coating (Vintage Metal Coating)

It is characterized as a metalizing process that perfectly deposits cold sprayable metal to almost any surface. For the fact that it is almost 95 percent metal, it possesses similar physical features like appearance and texture just like hot-cast metal. Its adhering capability spreads across a wide range of materials: foam, plastic, gypsum, wood, fiberglass, plaster, ceramics, concrete, terra cotta, cardboard, and even paper. Once it is done, the product has all the characteristics of a cast metal piece, including texture, luster and heat conductivity



ETCH

Wet etching is achieved with the use of chemicals that eat away the exposed surface creating a matt, dull finished area with the contrasting base finish. These finishes are most attractive when used with a contrasting base finish. Base finish of Brush with etching, Base finish mirror with Etching, etc. We have over fifty readily available patterns. Custom designs can also be made after approval of design by our production department.



MIRROR

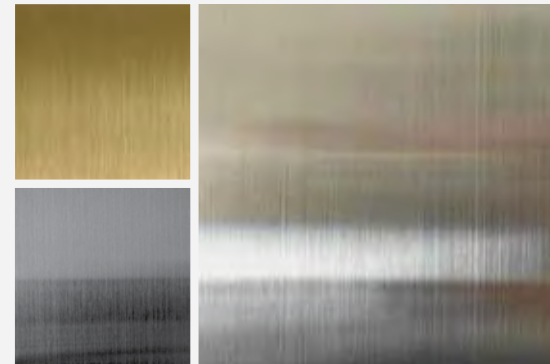
A highly reflective, non-directional finish that is manufactured by grinding followed by fine polishing of the surface in the presence of specific chemicals, this results in a surface equivalent to that of a glass mirror. A very popular finish among architects and interior designers, this finish is truly an eye catcher.



BRUSH

Also known as brushed, directional or satin finish. A #4 architectural finish is characterized by fine polishing grit lines that are uniform and directional in appearance. It is produced by polishing the metal with a 120–180 grit belt or wheel finish and then softened with an 80–120 grit greaseless compound or a medium non-woven abrasive belt

#4 Dairy or sanitary finish – A #4 dairy or sanitary finish is produced by polishing with a 180–240 grit belt or wheel finish softened with 120–240 grit greaseless compound or a fine non-woven abrasive belt or pad.



HAIR LINE

The name explains the look of the finish: these are well defined continuous uni-directional lines manufactured using abrasives that cut through the surface in microns. These differ from the #4 or Brush finish in surface roughness, grain structure and production methods. The Hairline finish is a smoother, reflective finish and is used primarily as a decorative product visually when adjacent to polished stainless steel.

The texture of the surface varies with bead materials.

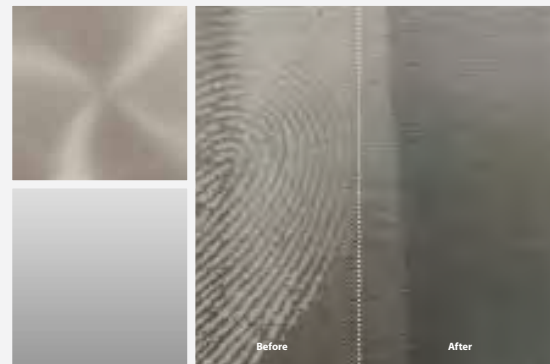


PEARL BEAD

This finish is achieved using fine abrasives which are fired at the stainless steel in a stream of compressed air. This achieves a uniform, matt grey finish on components and fabricated parts such as casting. It can also be used selectively for decorative purposes, simply referred to as a uniform matte finish of sheet surface with micro pits.

They are finishes with low reflectivity and no directionality are obtained by bead blasting and contrast well visually when adjacent to polished stainless steel.

The texture of the surface varies with bead materials.



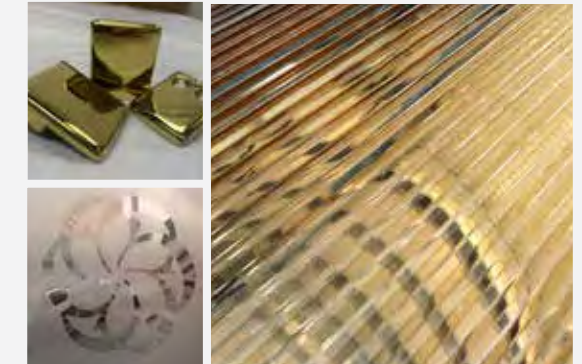
Anti-Finger

Fingerprint marks can be a major problem on some stainless steel applications with public direct access. The anti-fingerprint coating is transparent thin film, which protects the metal surface against corrosion and oxidative attack caused by fingerprints and hence reduces their visual perceptibility and provides lasting protection for stainless steel. This excellent coating protects Stainless Steel from water, oil, dust, and fingerprints, and makes the stainless steel easy to clean.



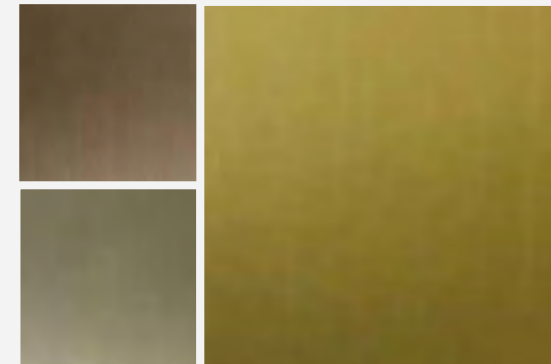
VIBRATION

This is a non directional, non uniform finish made by vibrating rough abrasives that embed multiple continuous scratches overlapping each other. This is one of the popular finishes and could be called modern art on stainless steel.



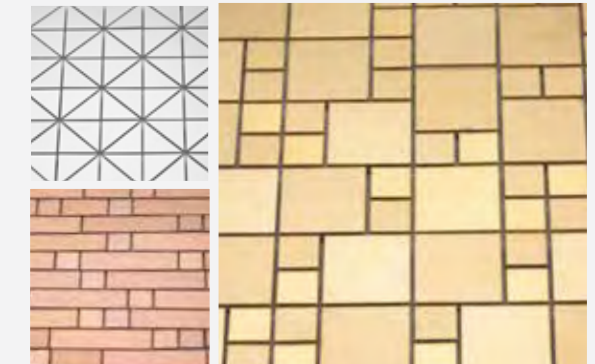
PVD (MONO & DICHROMIC)

These coatings are only a few microns thick and do not alter the finish in anyway. These are hard coatings that have a life that surpasses any other colour coating process on stainless steel. A wide variety of colours are available with this method ranging from polished brass (light gold) to black to multi-colour.



VINTAGE

For only stainless steel substrates, a unique coating process which was developed in-house is used in order to get the desired antique finish, be it bronze, brass or copper. We have developed over 15 different variations in each of these antique brass, antique bronze and antique copper respectively. Each part will be as unique as the other and no two parts may look the same if desired.



MOSAIC TILES

With a range of different materials and designs available, mosaic tiles is a perfect and cost effective way to turn any internal wall to a work of art. We are able to offer finishes of stainless steel which include all our available finishes. Materials such as glass, ceramic, mother of pearl, etcetera can be mixed with stainless steel tiles further enhancing the beauty of the mosaic. Our mosaic tiles are easy to install and take no time at all. You can find a step by step installation procedure under our technical specification visually, when adjacent to polished stainless steel. The texture of the surface varies with bead materials.

BRASA

Also known as brushed, directional or satin finish. A #4 architectural finish is characterized by fine polishing grit lines that are uniform and directional in appearance. It is produced by polishing the metal with a 120–180 grit belt or wheel finish and then softened with an 80–120 grit greaseless compound or a medium non-woven abrasive belt
 #4 Dairy or sanitary finish – A #4 dairy or sanitary finish is produced by polishing with a 180–240 grit belt or wheel finish softened with 120–240 grit greaseless compound or a fine non-woven abrasive belt or pad.

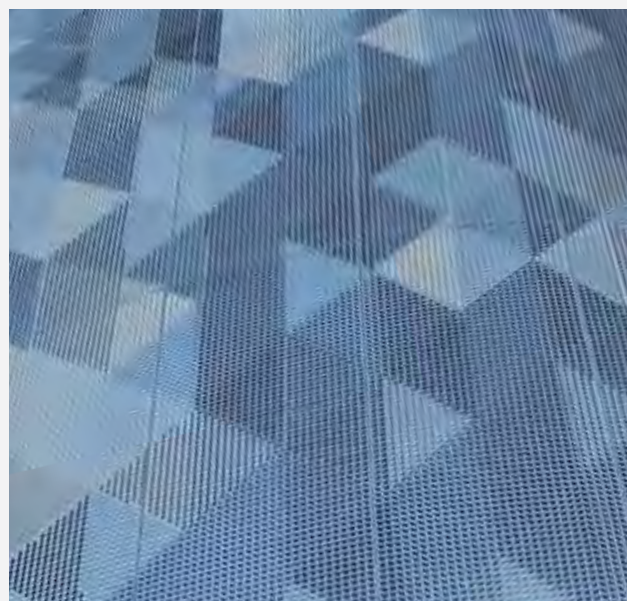
Material: -
 Grade: -
 Substrate Surface: -
 Substrate Color: -
 Patterns: -



ECCENTRICO

By combining the reflection of a light source on the metal and absolute art, we have brought about a revolutionary way to form images of any shape, size or color on to sheet metal. By changing every angle on tabs punched into the sheet metal, the light reflected upon these tabs creates a lively and crisp image which seems to change from each angle and distance you stand from the product.

Material: Stainless steel and Aluminum
Grade: Any Grade
Substrate Surface: Mill, 2B, Brush vibration, Mirror, Bead finish
Substrate Color: PVD Colors, Antique Finish
Patterns: Sheared Raised Pattern



Applications

Façade



Façade



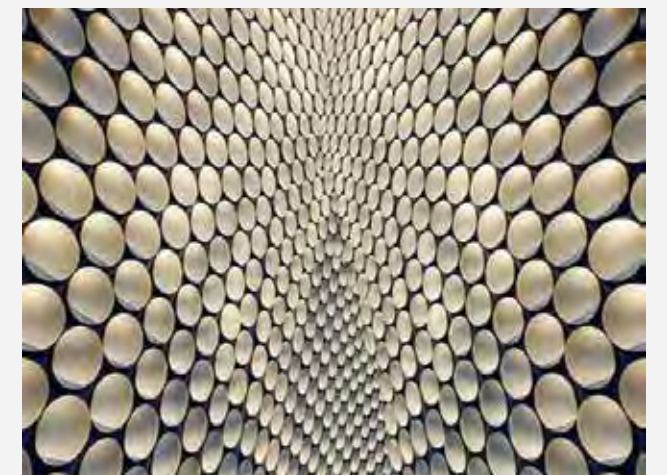
Façade



Façade



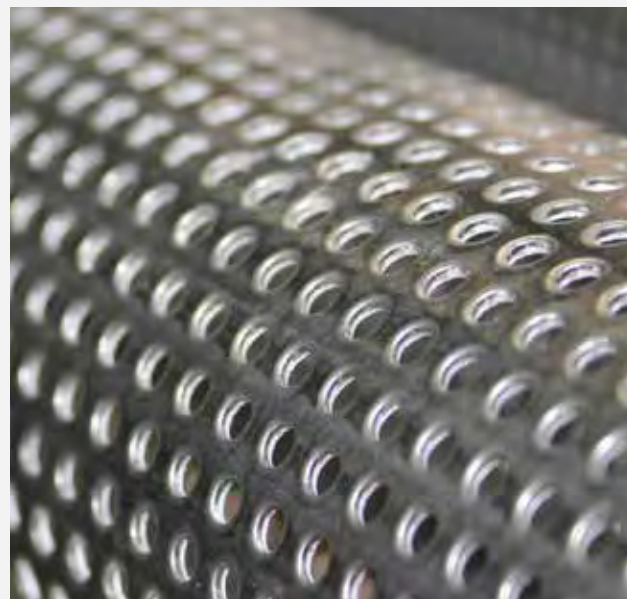
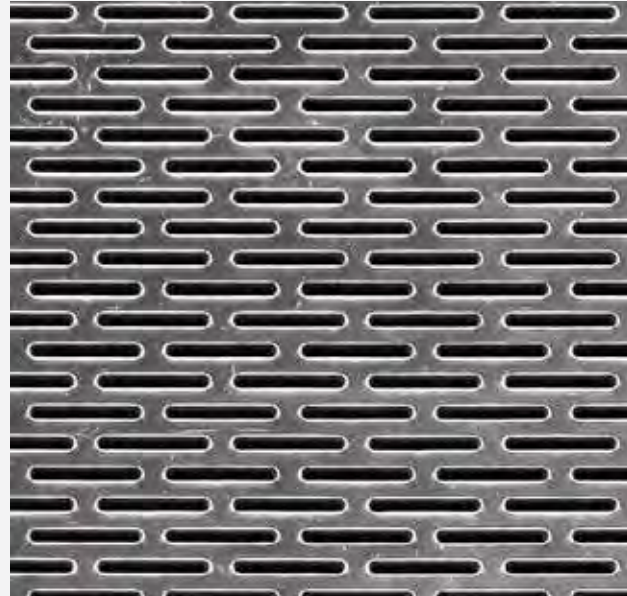
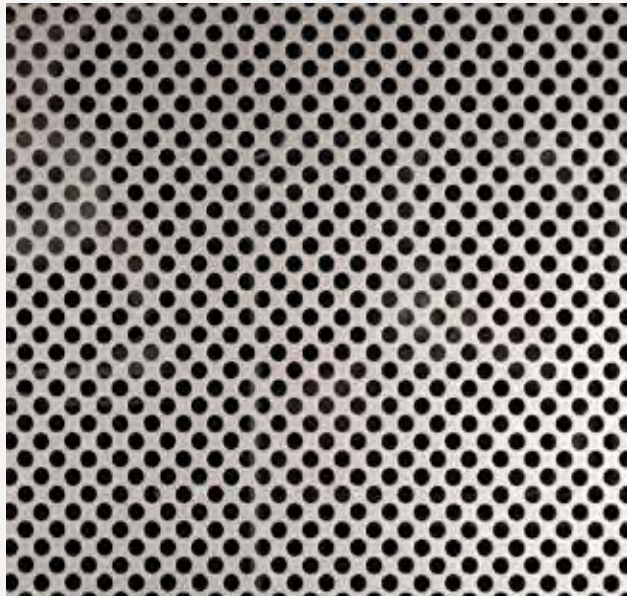
Interiors



PERFORATION

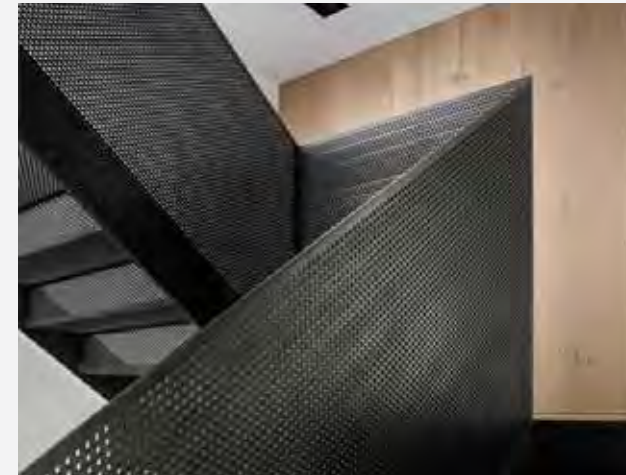
Perforation is a manufacturing process where different profiles and dimensions of holes are punched through the sheets. Sheets with various shapes such as Round, Oval, Square etc. with varying sizes and pitch can be produced in desired finishes.

Material: Stainless steel, Aluminum & Galvanized Iron
Grade: Any Grade
Substrate Surface: Mill, 2B, Brush vibration, Mirror, Bead finish
Substrate Color: PVD Colors, Antique Finish

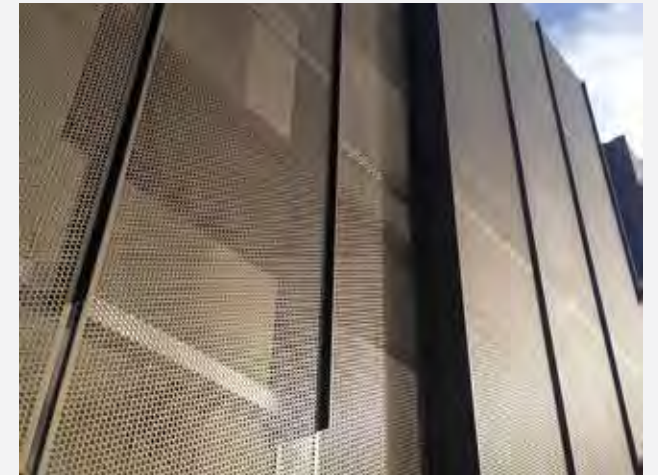


Applications

Stair Case



Façade



Façade



Furniture



Stair Case



Furniture

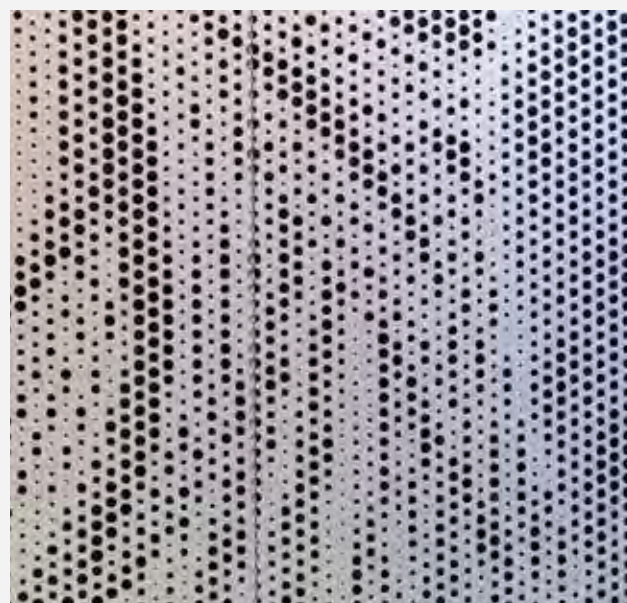
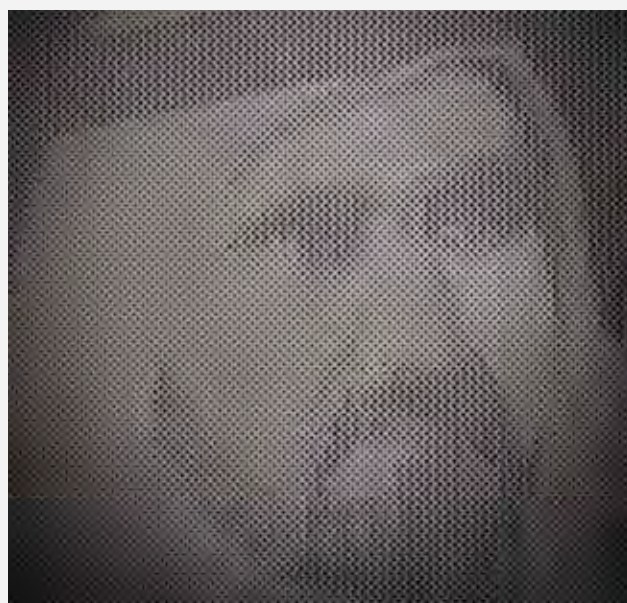




OBRAZ PERFORATION

OBRAZ Perforation is a unique treatment allowing for the full reflective control in a material. It is an extension of our stainless steel perforation pattern that reflects finely controlled values of light, thus generates an output that adds an enhanced and dynamic effect to the original source input. There are no traditional photographic materials or processes involved: no paint, laminated layers, printed dies or inks - "the material is the image and the image is the material."

Material: Stainless steel, Aluminum & Galvanized Iron
Grade: Any Grade
Substrate Surface: Mill, 2B, Brush vibration, Mirror, Bead finish
Substrate Color: PVD Colors, Antique Finish
Patterns: Perforations as per your image.

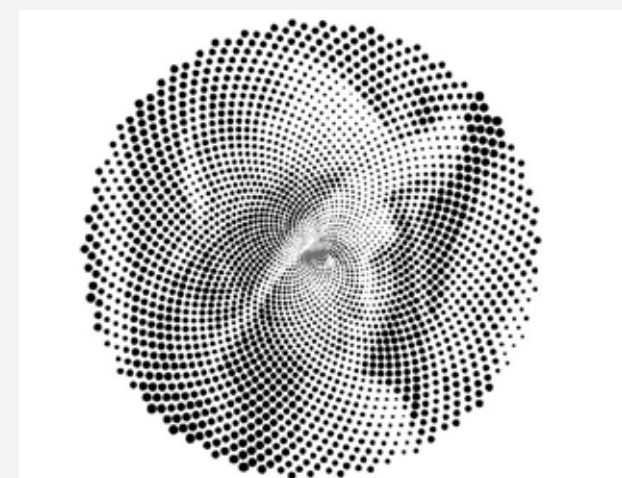


Applications

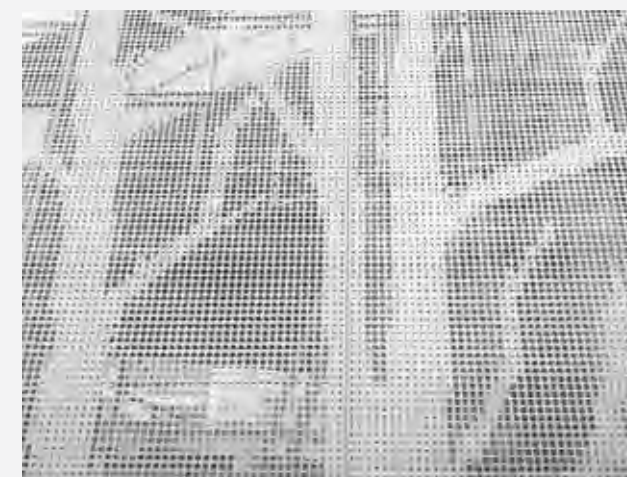
Signage



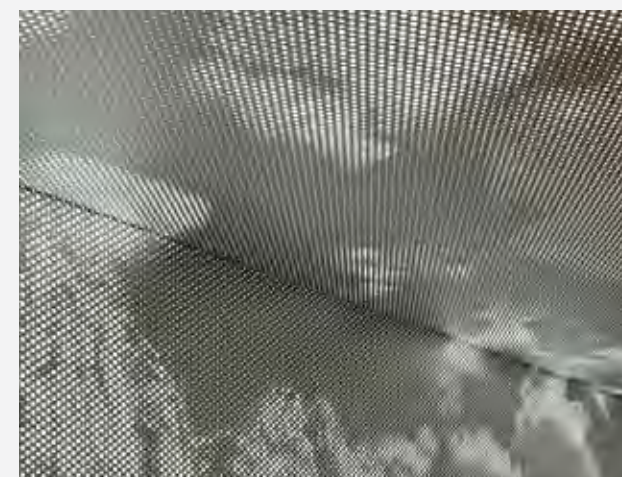
Arts & Decoration



Façade



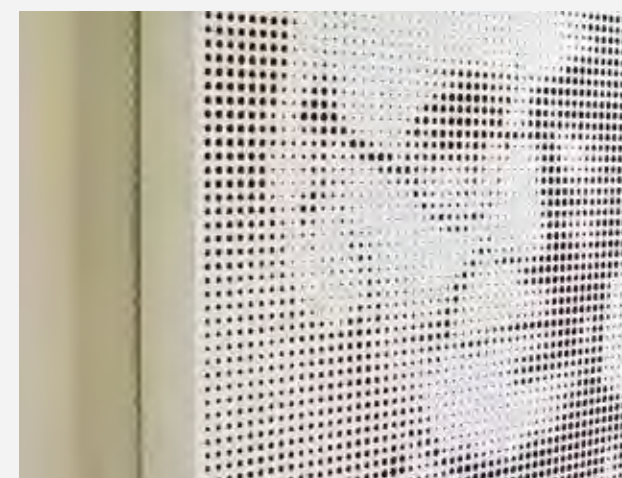
Interior Fit Out



Portraits



Signage

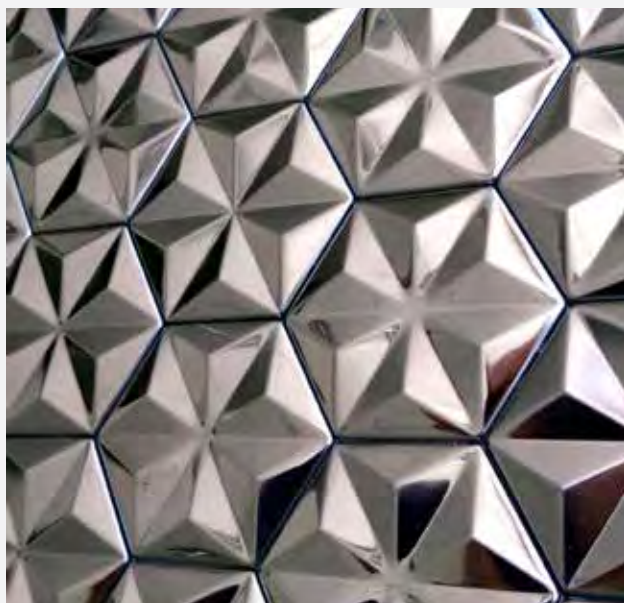




H3D PATTERN

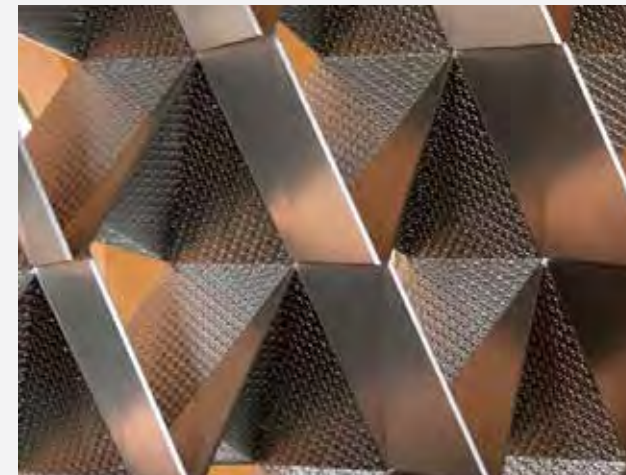
H3D designs are manufactured by processing a sheet of required thickness through one of our standard finishes such as mirror or brush. Once finished, sheets are placed on a machine which then through heavy pressure conforms the sheet into the desired 3D design of your choice. These sheets can then be colored through the process of PVD.

Material: Stainless steel.
Grade: 201, 304, 316.
Substrate Surface: Mill, 2B, Brush, Vibration, Hairline, Mirror.
Substrate Color: PVD Colours.
Patterns: Over 25 different patterns.



Applications

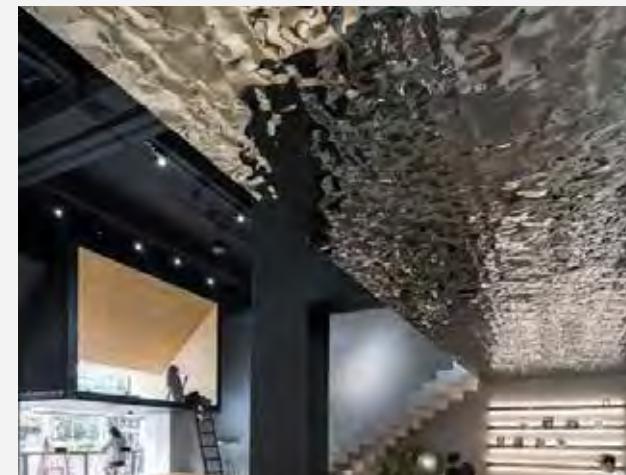
Interior Fit Out



Wall Cladding



False Ceiling



Wall Cladding



Column Cladding



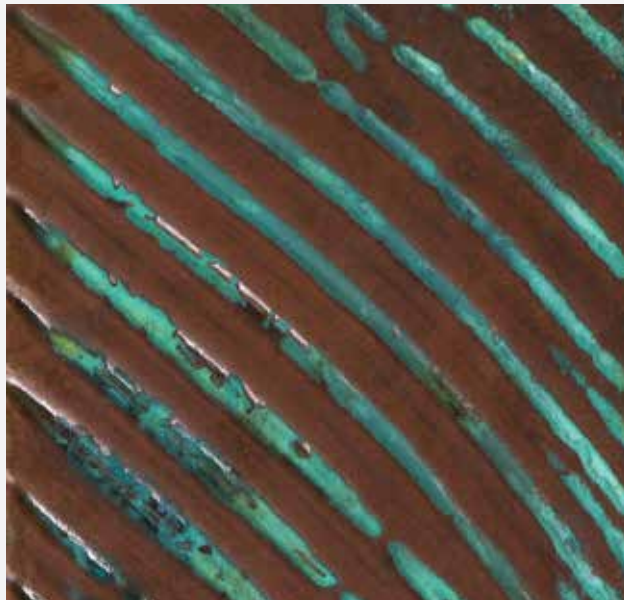
Staircase



LMC

For only stainless steel substrates, a unique coating process which was developed in-house is used in order to get the desired antique finish, be it bronze, brass or copper. We have developed over 15 different variations in each of these antique brass, antique bronze and antique copper respectively. Each part will be as unique as the other and no two parts may look the same if desired.

Material: Stainless steel
Grade: Any Grade
Substrate Surface: Any finish
Substrate Color: PVD Colors, Bronze & Brass



Applications

Wall Cladding



Interior Decoration



Wall Finishes



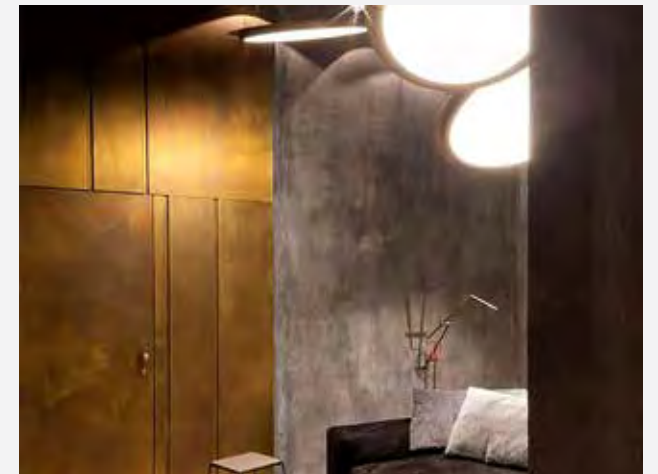
Interior Decoration



Wall Finishes



Wall Finishing

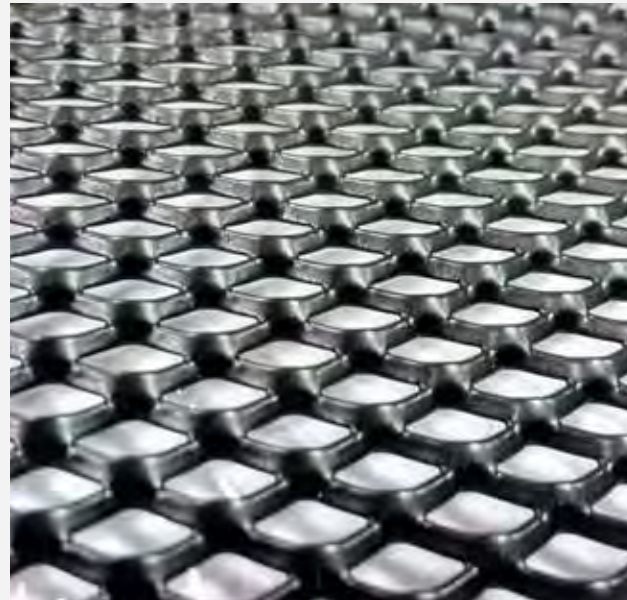
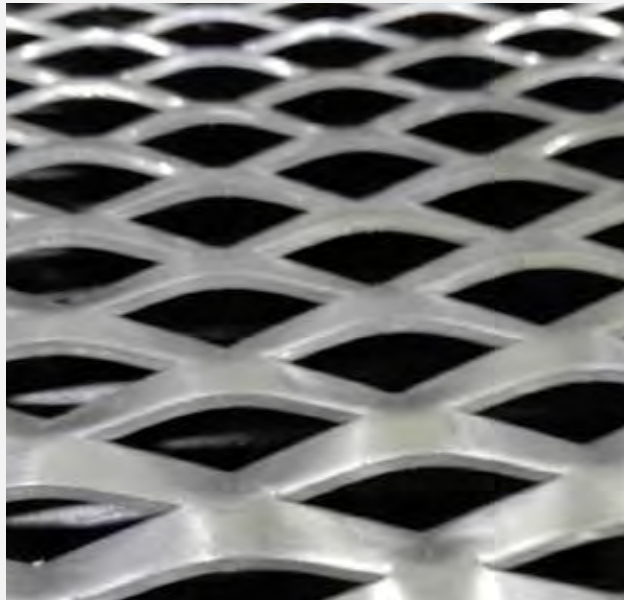


EXPANDED METAL (EMM)

Expanded metal as the name suggests is the process in which a plain sheet of stainless steel or aluminium is expanded by creating openings into the material through special dies which can vary in design as per customer requirements. This in turn results in the sheet to “expand” or elongate.

Technical Specifications

- Max Working Width: 1550mm
- Max Thickness: 1mm – 5mm
- Max Capacity: 6.0MT
- LWD Range: 15mm – 150mm
- SWD Range: 7mm – 60mm
- Strand Width (Standard Strand) : 1mm – 9mm



Applications

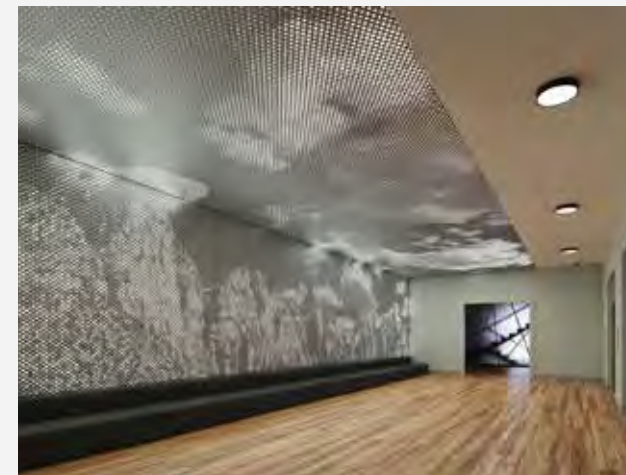
Wall Cladding



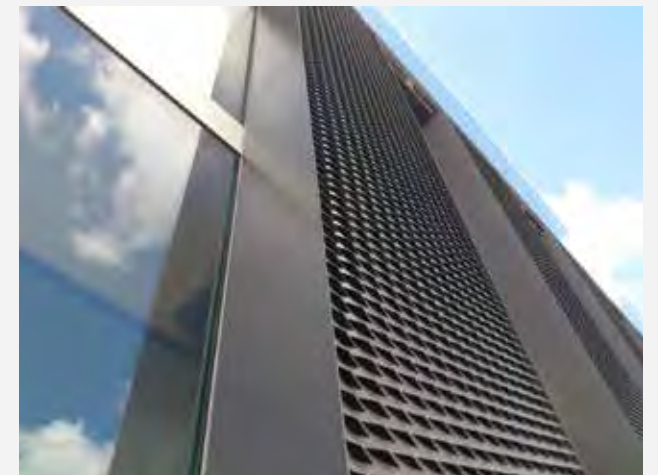
False Ceiling



Interior Decoration



Façade



Façade



Façade



WIRE MESH (NAETO)

Welded Wire Mesh- Welded wire mesh is a metal wire screen that is made from various alloys including steel, stainless steel, brass and copper. It is available in various sizes and shapes. Grids of parallel longitudinal wires are welded to cross wires at the required spacing, using electric fusion. The machines that are used to produce the mesh have precise dimensional control.

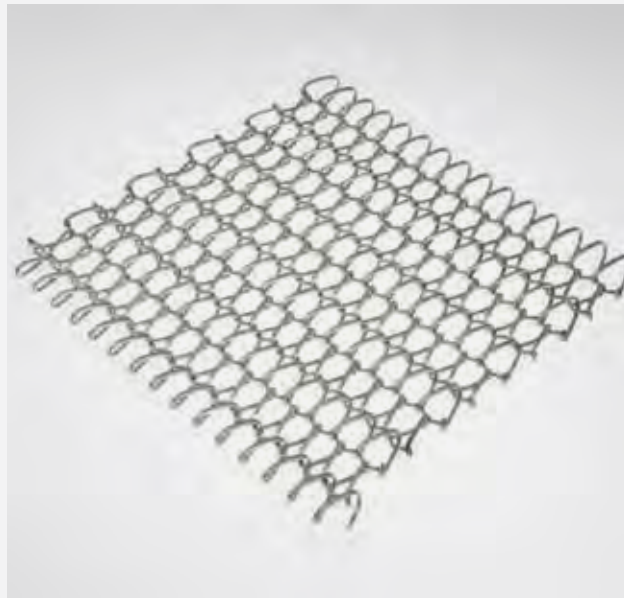
Woven Mesh- Also available in steel, stainless steel, brass and copper, woven wire mesh is made as a cloth with wire threads woven at right angles. Wires which run lengthwise are known as warp wires, whilst those running perpendicular are weft wires.

They are characterized by: Open area, Visible light transmittance/ reflectance, Flexibility in terms of movement.

HM LAGO - NAETO FLUMEN



HM LICORN 27i - NAETO ORNAMENTO



HM PC ALU.6010 - NAETO RHINE



HM FUTURA 3110 - NAETO PROXIMUS



Applications

Ceilings



Column Covers



Facade



Architectural



Partition & Security



Wire Mesh Doors



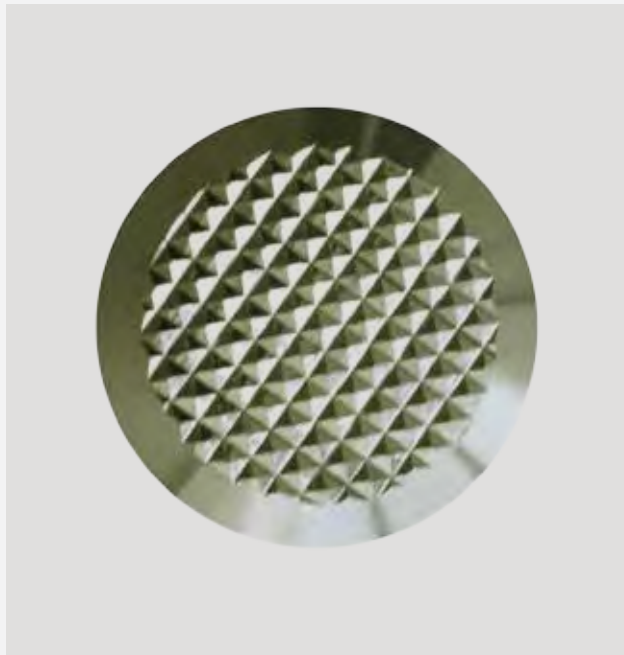
TAC TILES

Mainly used as a path indicator, tactiles are also used as an anti-slip mechanism on pathways. Stainless steel tactiles are much more resilient and low maintenance as compare to other materials and can be coloured into a variety of colours. Stainless steel tactiles can be provided with carborundum which provide added anti slip properties in demanding conditions where aesthetic properties also play a strong role such as boat decks.

Uses :

- Boarder Indicator - where the traditional guidance given by a standard footway between the property line and carriageway does not exist.
- Guidance Against Obstacle - where pedestrians need to be guided around obstacles.
- Focal Points - where a number of visually impaired people need to find a specific location and in transport terminals to guide between facilities.

HTT - XC -MDT1519C



HTT - XC - MDD1149



HTT - XC - MDT5021



HTT- XC - MDT5007



Applications

Warning



Warning Against Road



Warning Against Stairs



Warning Against Stairs



Tac Tiles for Direction



Directional & Warning



Airports



Hospitals



Facade



Interior Fit Out



Elevator Cabins



Elevator Cabins



Metro Stations



Escalator Cladding



Shopping Malls



Shopping Malls Exterior



Private Villas



Kitchen Equipment



PIPES & TUBES

The Tube & Pipe facility at Hidayath is the first stainless steel tube mill factory in the UAE and is recognised as cone the largest manufacturers and suppliers of tubes, pipes and pipe fittings in 304 and 316 stainless steel. We maintain the largest and most diverse inventory of ornamental and industrial stainless steel tubing; including Round, Square, Rectangular, Oval and Grooves. Our state-of-the-art in-house production and polishing allows custom cut and finish pipes and tubing in stainless steel to match the customer needs and desired specifications.



Stainless Steel- A312

| Pipe Size Inch/ mm | Outside Diameter Inch/ mm | Sch. 5 Inch/ mm | Sch 10 Inch/ mm | Sch. 40 Inch/ mm | Sch 80 Inch/ mm |
|-----------------------|---------------------------------|--------------------|--------------------|---------------------|--------------------|
| 1/2 / 12.7 | 0.84 / 21.34 | 0.065 / 1.65 | 0.083 / 2.11 | 0.109 / 2.77 | 0.147 / 3.73 |
| 3/4 / 19.01 | 1.05 / 26.67 | 0.065 / 1.65 | 0.083 / 2.11 | 0.113 / 2.87 | 0.154 / 3.91 |
| 1 / 25.4 | 1.315 / 33.4 | 0.065 / 1.65 | 0.109 / 2.77 | 0.133 / 3.38 | 0.179 / 4.55 |
| 1 1/4 / 31.8 | 1.66 / 42.2 | 0.065 / 1.65 | 0.11 / 2.77 | 0.14 / 3.56 | 0.191 / 4.85 |
| 1 1/2 / 38.1 | 1.9 / 48.26 | 0.065 / 1.65 | 0.109 / 2.77 | 0.145 / 3.68 | 0.2 / 5.08 |
| 2 / 50.8 | 2.375 / 60.33 | 0.065 / 1.65 | 0.109 / 2.77 | 0.154 / 3.91 | 0.218 / 5.53 |
| 2 1/2 / 63.5 | 2.875 / 73.03 | 0.083 / 2.11 | 0.12 / 3.05 | 0.203 / 5.16 | 0.276 / 7.01 |
| 3 / 76.2 | 3.5 / 88.9 | 0.083 / 2.11 | 0.12 / 3.05 | 0.216 / 5.49 | 0.3 / 7.62 |
| 3 1/2 / 88.9 | 4 / 101.6 | 0.083 / 2.11 | 0.12 / 3.05 | 0.226 / 5.74 | 0.318 / 8.08 |
| 4 / 101.6 | 4.5 / 114.3 | 0.083 / 2.11 | 0.12 / 3.05 | 0.237 / 6.02 | 0.337 / 8.56 |
| 6 / 152.4 | 6.625 / 168.28 | 0.109 / 2.77 | 0.134 / 3.40 | 0.28 / 7.11 | 0.432 / 10.98 |
| 8 / 203.2 | 8.625 / 219.08 | 0.109 / 2.77 | 0.134 / 3.76 | 0.322 / 8.88 | 0.5 / 12.70 |

Stainless Steel- A554

(A) Round Profile

Finish - 2B, Brush (#400), Satin, #600 (Standard Polish), #800 (Super Mirror)
Length - 6 m (Standard), 3m.
Custom length available on request.

| Size (Dia) mm | Thickness (mm) | | | | | | | | |
|------------------|----------------|-----|-----|------|---|-----|---|-----|---|
| | 1* | 1.2 | 1.5 | 1.65 | 2 | 2.5 | 3 | 3.5 | 4 |
| 12.7 | • | • | • | • | | | | | |
| 15.87 | • | • | • | • | | | | | |
| 16.0 | • | • | • | • | | | | | |
| 19.05 | • | • | • | • | • | | | | |
| 21.34 | • | • | • | • | • | | | | |
| 25.0 | • | • | • | • | • | | | | |
| 25.4 | • | • | • | • | • | • | | | |
| 31.8 | • | • | • | • | • | • | | | |
| 33.4 | | • | • | • | • | • | • | • | |
| 38.1 | | • | • | • | • | • | • | • | |
| 42.2 | | • | • | • | • | • | • | • | |
| 48.3 | | • | • | • | • | • | • | • | • |
| 50.8 | | | • | • | • | • | • | • | • |
| 60.3 | | | • | • | • | • | • | • | • |
| 63.5 | | | • | • | • | • | • | • | • |
| 73.05 | | | • | • | • | • | • | • | • |
| 76.2 | | | • | • | • | • | • | • | • |
| 88.9 | | | • | • | • | • | • | • | • |
| 101.6 | | | • | • | • | • | • | • | • |
| 114.3 | | | | | • | • | • | • | • |

(B) Rectangular Profile

Finish - 2B, Brush (#400), Satin, #600 (Standard Polish), #800 (Super Mirror)
Length - 6 m (Standard), 3m.
Custom length available on request.

| Size (Dia) mm | Thickness (mm) | | | | | | | | |
|------------------|----------------|-----|-----|------|---|-----|-----|-----|-----|
| | 1* | 1.2 | 1.5 | 1.65 | 2 | 2.5 | 3.0 | 3.5 | 4.0 |
| 20x10 | ■ | ■ | | | | | | | |
| 30x15 | ■ | ■ | ■ | | | | | | |
| 40x20 | ■ | ■ | ■ | ■ | ■ | | | | |
| 50x25 | | ■ | ■ | ■ | ■ | | | | |
| 60x30 | | ■ | ■ | ■ | ■ | ■ | | | |
| 80x40 | | | ■ | ■ | ■ | ■ | ■ | | |
| 100x50 | | | ■ | ■ | ■ | ■ | ■ | | |
| 25.40 x 50.80 | | | ■ | ■ | ■ | | | | |
| 50.80 x 101.60 | | | ■ | ■ | ■ | ■ | ■ | | |

Stainless Steel- A554





(C) Square Profile

Finish - 2B, Brush (#400), Satin, #600 (Standard Polish), #800 (Super Mirror)
Length - 6 m (Standard), 3m.
Custom length available on request.

| Size (Dia) mm | Thickness (mm) | | | | | | | | |
|------------------|----------------|-----|-----|------|---|-----|---|-----|---|
| | 1* | 1.2 | 1.5 | 1.65 | 2 | 2.5 | 3 | 3.5 | 4 |
| 10x10 | ■ | ■ | | | | | | | |
| 15x15 | ■ | ■ | ■ | | | | | | |
| 20x20 | ■ | ■ | ■ | ■ | ■ | | | | |
| 25x25 | | ■ | ■ | ■ | ■ | | | | |
| 30x30 | | ■ | ■ | ■ | ■ | | | | |
| 38.1x38.1 | | ■ | ■ | ■ | ■ | | | | |
| 40x40 | | ■ | ■ | ■ | ■ | ■ | ■ | | |
| 50x50 | | | ■ | ■ | ■ | ■ | ■ | ■ | ■ |
| 60x60 | | | ■ | ■ | ■ | ■ | ■ | ■ | ■ |
| 70 x 70 | | | ■ | ■ | ■ | ■ | ■ | | |
| 80x80 | | | ■ | ■ | ■ | ■ | ■ | ■ | ■ |
| 12.70 x 12.70 | ■ | ■ | ■ | | | | | | |
| 15.87 x 15.87 | ■ | ■ | ■ | | | | | | |
| 19.05 x 19.05 | ■ | ■ | ■ | ■ | ■ | | | | |
| 31.80 x 31.80 | | ■ | ■ | ■ | ■ | | | | |
| 50.80 x 50.80 | | | ■ | ■ | ■ | ■ | ■ | | |
| 63.50 x 63.50 | | | ■ | ■ | ■ | ■ | ■ | | |
| 76.20 x 76.20 | | | ■ | ■ | ■ | ■ | ■ | | |
| 101.60 x 101.60 | | | ■ | ■ | ■ | ■ | ■ | | |

(D) Profile Tubes

Finish - 2B, Brush (#400), Satin, #600 (Standard Polish), #800 (Super Mirror)
Length - 6 m (Standard), 3m.
Custom length available on request.

| AS | SDSD | | | |
|-------------------|---|-----|------|---|
| | | 1.5 | 1.65 | 2 |
| 2"- 3" Groove |  | ▼ | ▼ | ▼ |
| 76x38 Oval |  | ▼ | ▼ | ▼ |
| 86x58 Oval Groove |  | ▼ | ▼ | ▼ |
| 2" D Shape |  | | | |

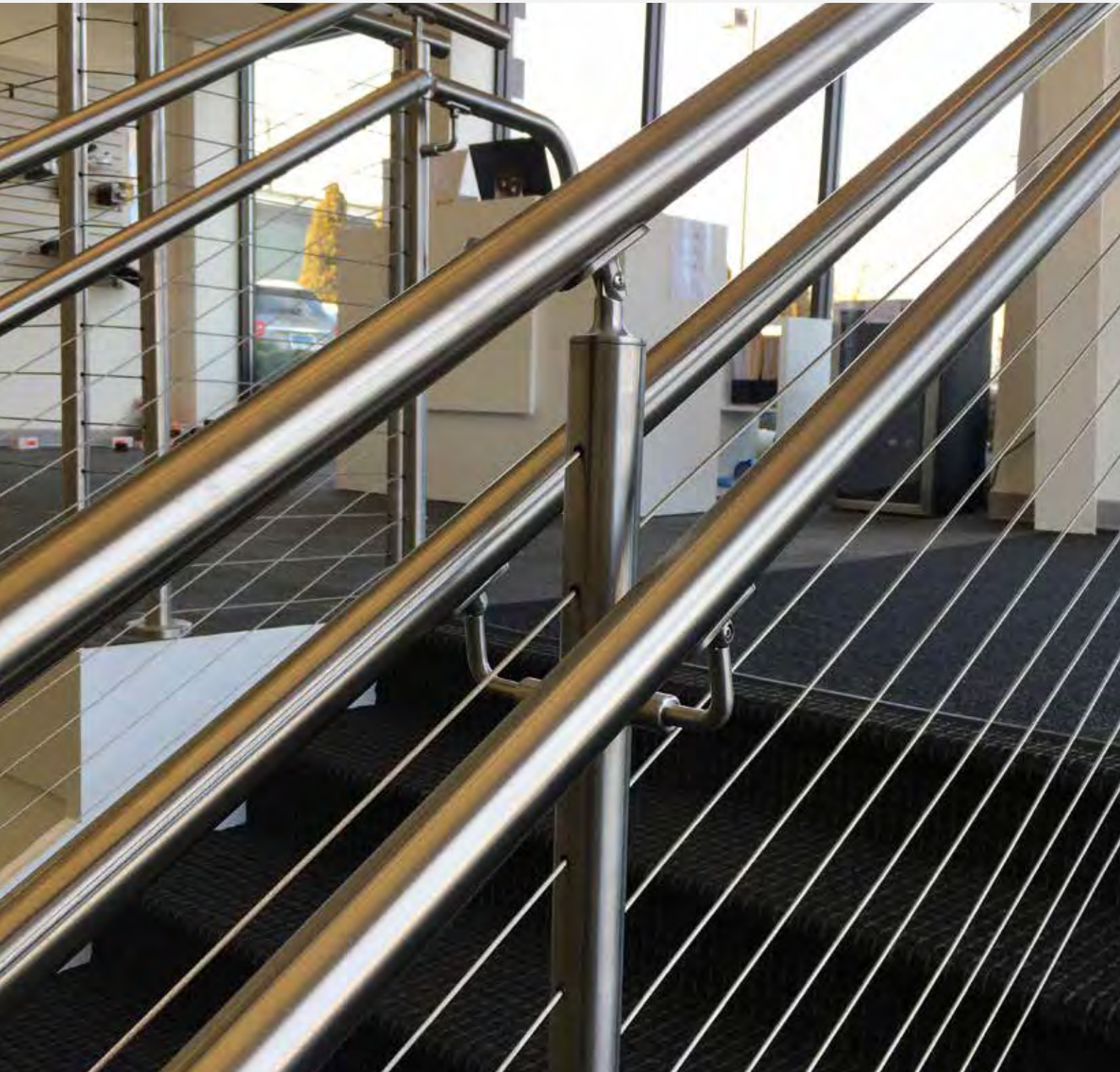


HANDRAIL FITTINGS

As the region's largest solution provider in stainless steel and allied metal products and solutions for architectural applications, we specialize in design, process, manufacture and supply of Handrail Equipment and accessories. Made from high quality 304 and 316 Stainless Steel, our products are sound and sustainable.

Our manufacturing capacity includes Pipe Bend Elbows, Wall Holding, Ground Holding, End Caps, Pipe/ Rod Connectors, Pipe Fittings to name a few.

Marketed under brand name H-Fit, our products are distributed/ retailed across GCC, Middle East, South East Asia through our offices and strategic retail network.



CONNECTING Pipe Bend Elbows



Short Radius



Long Radius



Sharp Bend



Long Radius



Long Radius



Short Radius



WALL HOLDING

Brackets/ Posts



Short Radius



Long Radius



Sharp Bend



Flat Central Post



Round Central Post



Round End Post



Flat Central Post



Round Central Post



Round End Post



GROUND HOLDING

Base Plates/ Covers / saddles / Flanges



Loose Fit - 2



Circular Flange



Saddle



Adjustable Saddle

END CAPS/ COVERS



Flat Base



Flat Base



Curved (Chrome)



Curved





GLASS FITTINGS

As the region's largest solution provider in stainless steel and allied metal products and solutions for architectural applications, we specialize in design, process, manufacture and supply of Glass Fittings and accessories. Made from high quality 304 and 316 Stainless Steel, our products are sound and sustainable. Our glass fittings includes Glass Fixers, Patch Fittings & Accessories, Shower Hinges, Glass Connectors, Glass Holders, Glass Clamps, U-Channels, Floor Machines, Door Handles and Lip Seal to name a few. Marketed under brand name H-Fit, our products are distributed/retailed across GCC, Middle East, South East Asia through our offices and strategic retail network.



PATCH FITTINGS & ACCESSORIES



HF-10
Bottom Door Pivot Patch



HF-20
Top Door Pivot Patch



HF-40 K
Over Panel Patch without Pivot



HF-50 R
Door End Corner Patch



HF-34
Bottom Lock



HF-34 R
Bottom Lock



HF-9003
Floor Hinge Accessories/Set



HF-30
Top Fixed Panel Pivot Patch



PIPE FITTINGS



HF-9907
Pipe Support Wall Mount

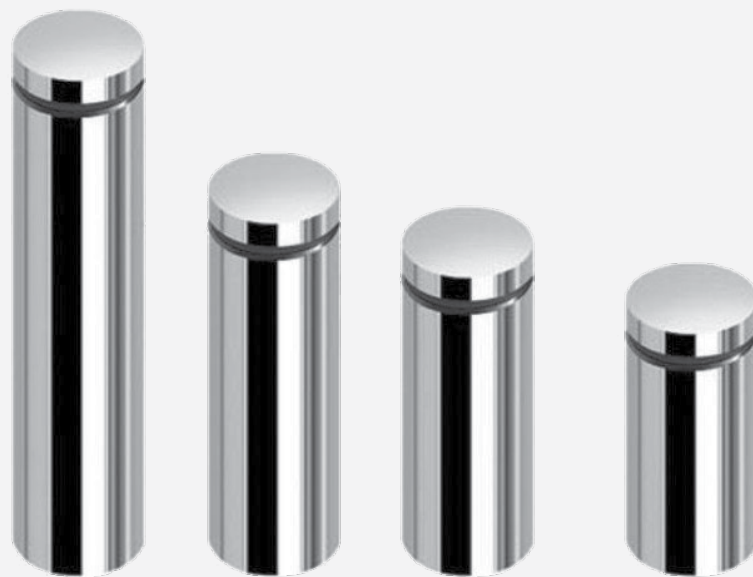


HF-9914
Pipe Support Glass Mount



HF-9915
Adj. Elbow Pipe to Pipe

GLASS HOLDER



Complete H-Fit Glass Fittings Catalogue available on request.

GLASS CLAMPS



HF-0825
Casted 8-10 mm



HF-0826
Casted 10-12 mm



HF-50 K
Mid Panel with Lock Slot



HF-0827
Casted 12-15mm



HF-0826P
Casted 8-10 mm



HF-9001
Door Frame Pivot



HF-22/135
135° Glass-Glass



HF-22/180
180° Glass-Glass



HF-31/90
90° Wall-Glass



HF-32/90
90° Glass-Glass



HF-32/135
135° Glass-Glass



HF-32/180
180° Glass-Glass

Complete H-Fit Glass Fittings Catalogue available on request.

BATHROOM EQUIPMENT

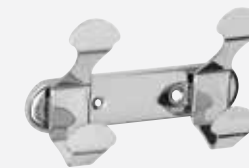
We specialize in design, manufacture, and supply of world-class bathroom equipment and accessories under the brand name H-Bath. Made from the highest quality AISI 304 stainless steel, we manufacture products for beautiful, functional, comfortable and sustainable bathrooms that ensure wellbeing for many years to come. Our design and engineering team is constantly striving to innovate new products and manufacturing techniques to meet the demands of our clientele. Technical Services team is looking after the installation and maintenance of the products ensuring that the perfectly manufactured items will be properly installed, following the ergonomics and safety standards.



0402.528-30
Towel Shelf with Bar



0404.304-30
Single Towel Bar



0402.210-30
Double Robe Hook



0404.318-30
Liquid Soap Dispenser with Crystal
Container and Metallic Pump



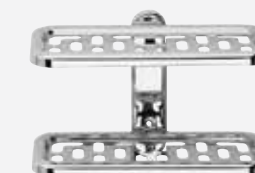
0404.121-30
Soap and Sponge Holder



0411.212-30
Paper Holder with Cover and Reserve



0404.001-30
Towel Ring



0402.235-30
Double Metallic Soap
and Sponge Holder



BATHROOM EQUIPMENT



0404.331-30
Recessed Tissue Dispenser



0405.439-30
Waste Bin with Lid 20 in



0426.022-00
Mirror 70x70 cm Plain with 2x24W
Vertical Lights Square



HF-9015
135° Glass-Glass



0405.092-30
Wall Mounted Magnifying Mirror with
Light D190 mm

BATHROOM EQUIPMENT



0404.318-30
Liquid Soap Dispenser with Crystal
Container and Metallic Pump



0400.160-00
Recessed Paper Towel Dispenser



0400.360-00
Recessed Paper Towel Dispenser and
Waste Receptacle Combination



0430.118-00
Vanity Liquid Soap Dispenser 1000 ml



0404.518-00
Liquid Soap Dispenser 1200 ml Vertical

BOLLARDS



Bolt Down Round Base Plate
with Flat Top



Root Fixed
with Flat Top



Bolt Down Round Base Plate
with Groove Top



Bolt Down Round Base Plate
with Angle Top

Custom design available on request.

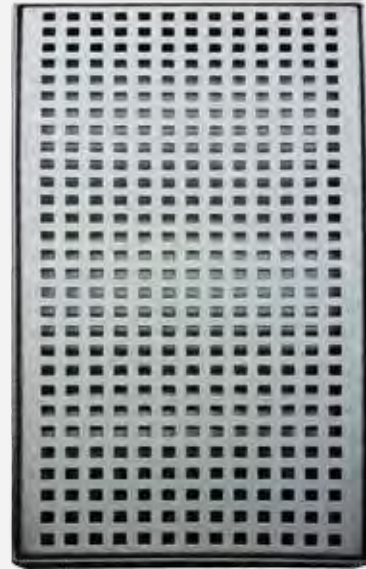
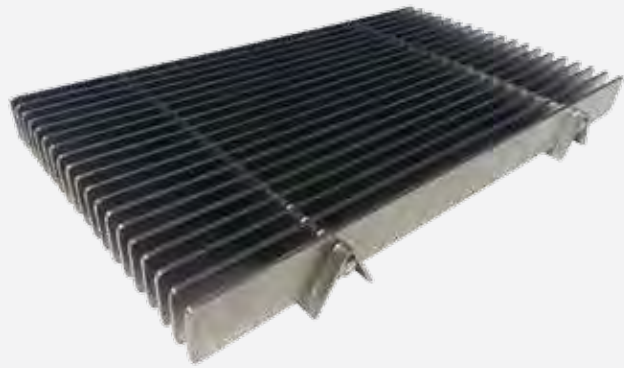
METAL DOORS



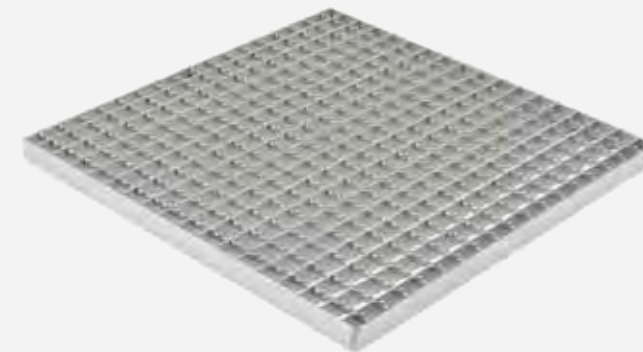
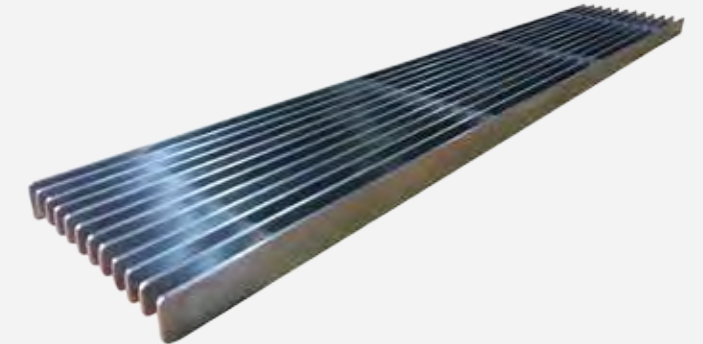
Custom design available on request.



GRATINGS & CHANNELS



GRATINGS & CHANNELS



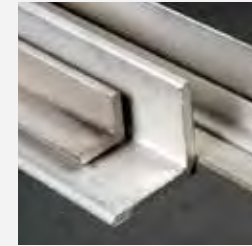
MATERIAL SUPPLIES

As the oldest and the most reliable stockists and traders of stainless steel products in the Emirates, we are the chosen partners to many reputable Architectural Companies, Designers and Project Engineers. We source our stock from the world's largest manufacturers in Flats, Longs, Tubular, Fittings and Surface Treatment Essentials.



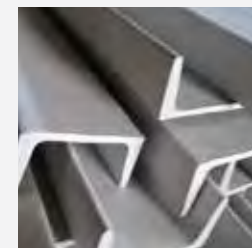
LONG PRODUCTS

Angles



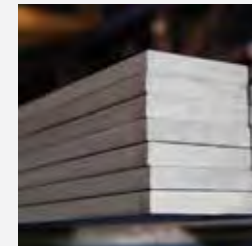
Thickness (mm) : 3.0 to 12.0
Size (mm) : 20x20 to 100x100
Length (m) : 6
Finish: Mill finish

U-channels



Thickness (mm) : 5,6
Size (mm) : 80x40 to 150x75
Length (m) : 6
Finish: Mill finish

Flat Bars



Thickness (mm) : 3.0 to 12.0
Size (mm) : 10x3 to 150x10
Length (m) : 6
Finish: Mill finish

Round Bars



Thickness (mm) : 3 to 203
Size (mm) :
Length(m) : 6
Finish: Mill finish

Square Bars



Thickness(mm) :
Size (mm) : 5.0 to 50
Length(m) : 4
Finish: Mill finish

FLAT PRODUCTS

Stainless Steel

Coils



| Thickness (mm) | Width (mm) | Finish |
|-------------------|---------------|------------|
| 0.4 to 0.7 | 1000 to 1500 | BA, 2B |
| 0.8 to 1.0 | 1000 to 1500 | BA, 2B |
| 1.2 to 2.0 | 1000 to 1500 | BA, 2B, #4 |
| 3.0 to 6.0 | 1220 to 2000 | #1 |
| 8.0 to 12.0 | 1220 to 2000 | #1 |

Sheets/ Plates



| Thickness (mm) | Width (mm) | Length (m) | Finish |
|-------------------|----------------|---------------|--|
| 0.4 | 1220 | 2.44, 3.05 | 2B |
| 0.5 to 0.7 | 1220 | 2.44, 3.05 | 2B, Brush, Hairline, Mirror, Etch, PVD, Emboss, perforation |
| 0.8 to 3.0 | 1220 | 2.44, 3.05 | 2B, Brush, Vibration, Marble, Mirror, Etch, PVD, Emboss, perforation |
| 0.8 to 3.0 | 1500 | 3.0 | 2B, Brush, Vibration, Marble, Mirror, PVD, perforation |
| 4.0 to 6.0 | 1200 | 2.44, 3.05 | 2B, Brush, Vibration, Marble, Mirror |
| 4.0 to 6.0 | 1500 | 3.0 | 2B, Brush, Vibration, Marble, Mirror |
| 3.0 to 6.0 | 2000 | 6.0 | 2B, #1 |
| 8.0 to 6.0.0 | 1220 | 2.44 | #1 |
| 8.0 to 25.0 | 1500 , 2000 | 6.0 | #1 |

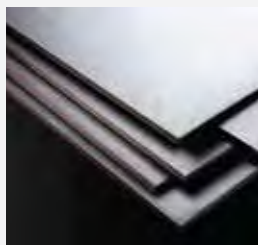
Chequered Plates



| Thickness (mm) | Width (mm) | Length (m) | Finish |
|-------------------|---------------|---------------|-------------|
| 1.5 to 3.0 | 1220, 1500 | 2.44, 3.0 | Mill Finish |

Carbon Steel

Plates



| Thickness (mm) | Width (mm) | Length (m) | Finish |
|-------------------|--------------------------|----------------------|-------------|
| 6.0 to 30.0 | 1500, 2000 2500, 3000 | Min. 6.0 Max.12.0 | Mill Finish |

FLAT PRODUCTS

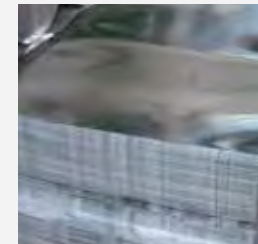
Aluminium

Coil



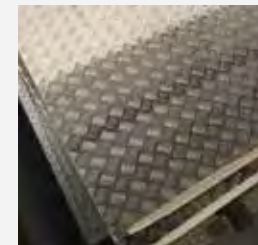
| Thickness (mm) | Width (mm) | Finish |
|-------------------|---------------|-------------|
| 0.5 to 3.0 | 1220, 1500 | Mill Finish |

Sheet/ Plates



| Thickness (mm) | Width (mm) | Length (m) | Finish |
|-------------------|---------------|---------------|-------------|
| 0.5 to 50.0 | 1220 | 2.44 | Mill Finish |

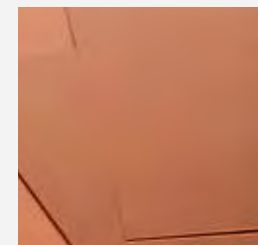
Chequered Sheets



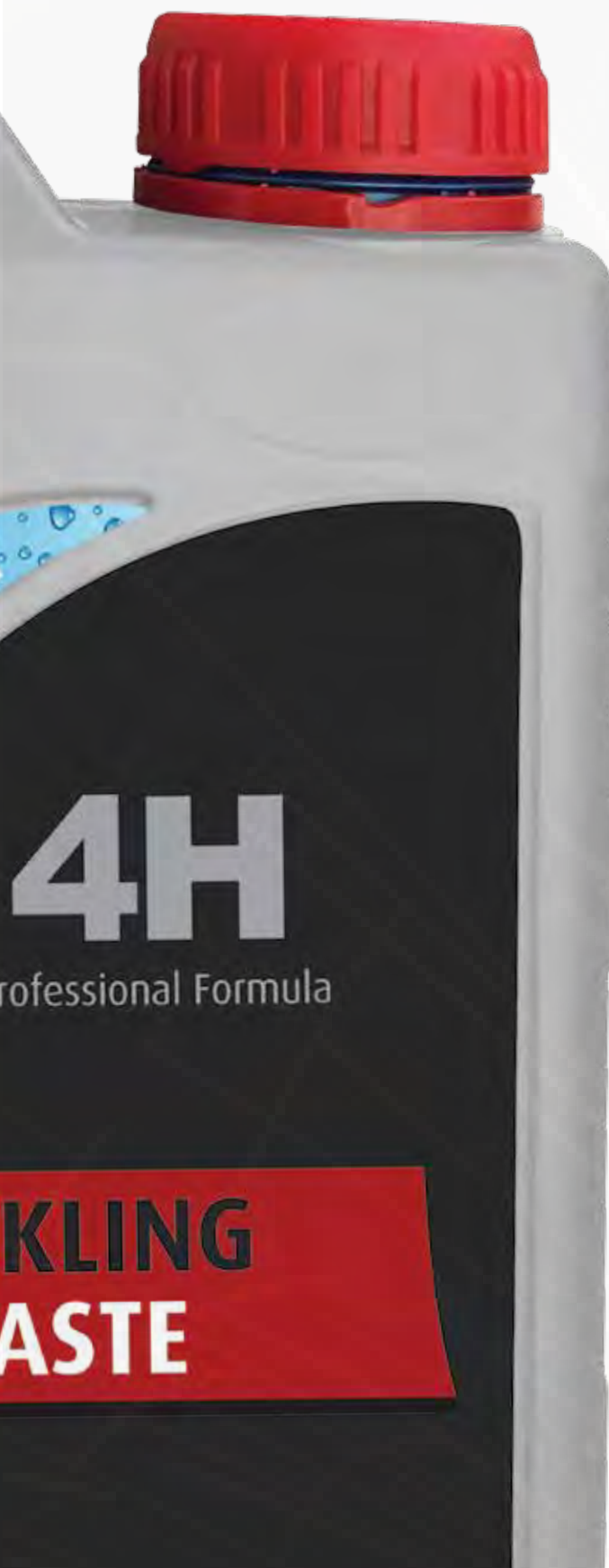
| Thickness (mm) | Width (mm) | Length (m) | Finish |
|-------------------|---------------|---------------|-------------|
| 1.3 to 4.8 | 1220 | 2.44 | Mill Finish |

Brass & Copper

Sheets



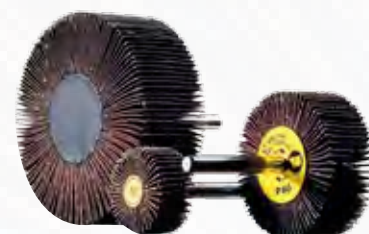
| Thickness (mm) | Width (mm) | Length (m) | Finish |
|-------------------|---------------|---------------|-------------|
| 0.5 to 12.0 | 1220 | 2.44 | Mill Finish |



CHEMICALS & ACCESSORIES



ABRASIVES



PRODUCT DESCRIPTION

SS Electrodes Gr316L-1, Size: 2.5mm, Vacuum Pack

SS Electrodes Gr316L-1, Size: 3.2mm, Vacuum Pack

SS Electrodes Gr316L-1, Size: 4mm, Vacuum Pack

SS Electrodes Gr308L-16, Size: 2.5mm, Vacuum Pack

SS Electrodes Gr308L-16, Size: 3.2mm, Vacuum Pack

SS Electrodes Gr309L-16, Size: 2.5mm, Vacuum Pack

SS Electrodes Gr309L-16, Size: 3.2mm, Vacuum Pack

TIG WIRE GR 316L, Size: 1.6mm

TIG WIRE GR 316L, Size: 2mm

TIG WIRE GR316L, Size: 2.4mm

TIG WIRE GR316L, Size: 3.2mm

TIG WIRE GR 309L, Size: 1.2mm

TIG WIRE GR 309L, Size: 1.6mm

TIG WIRE GR 309L, Size: 2mm

TIG WIRE GR 309L, Size: 2.4mm

TIG WIRE GR 308L, Size: 1.2mm

TIG WIRE GR 308L, Size: 1.6mm

TIG WIRE GR 308L, Size: 2mm

TIG WIRE GR 308L, Size: 2.4mm

TIG WIRE GR 308L, Size: 3.2mm

TIG WIRE COPPER COATED GR 70S-6, Size: 1.6mm

TIG WIRE COPPER COATED GR 70S-6, Size: 2.4mm

E6013 ELECTRODES, Size: 2.5mm

E6013 ELECTRODES, Size: 3.2mm

E6013 ELECTRODES, Size: 4mm

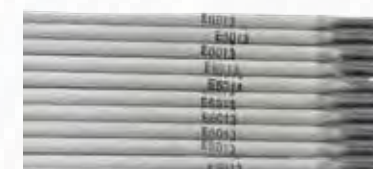
E7018 ELECTRODES, Size: 2.5mm

E7018 ELECTRODES, Size: 3.2mm

E7018 ELECTRODES, Size: 4mm

E71T-1C Flux Cord Wire, Size: 1.2mm

ER70S-6 SOLID WIRE, Sizes: 0.8mm, 1mm & 1.2mm





Kingdom of Saudi Arabia



- Harm Makkah
- Queens Building
- Riyad Bank
- Rajhi Bank
- Sahilia Plaza Al- Sammam
- Sabb Tahiihah
- South Mall





Kingdom of Saudi Arabia



- Saudi Metro
- Al Kadir Villa, Jeddah
- Nestle, Jeddah
- Shoaiba Desalination Plant
- AL WAFAYAH
- Al Maria





SERVICES

As the preferred metal services center in the Middle East, we specialize in a wide array of services ranging from coil processing to small parts CNC milling. Our group prides in housing some of the world's most advanced and large format machinery and tools to provide customized cuts, length, size and finish to our discerning customer base across Middle East, Africa, Asia and CIS countries. Our service portfolio also includes various in-house surface treatment solutions that include Electropolishing, Pickling, Passivation, Anodizing (hard & colour), Blasting and Painting.

SERVICES



WATERJET CUTTING

Auto | Rotation | Cutting| 5-Axis

Waterjet is a generic term used to describe equipment for cutting or cleaning purposes using a jet of water at high velocity and pressure, or a mixture of water and an abrasive substance. Waterjet is the most versatile process, because it is able to cut almost any type of material. Abrasive jet is a subcategory of waterjet in which abrasive is introduced to accelerate the process. The mixing of abrasive particles in water jet in such a manner that water jet's momentum is transferred to the abrasives.

Capabilities

Stainless Steel

Thickness 0.5-80 mm
Max Width 3500 mm
Max. Length 12000 mm

Carbon Steel

Thickness 90 mm (max)
Max Width 3025 mm
Max. Length 12000 mm

Aluminum Steel

Thickness 145 mm (max)
Max Width 3025 mm
Max. Length 12000 mm

G.I. Steel

Thickness 90 mm (max)
Max Width 3025 mm
Max. Length 12000 mm



TUBE/ PIPE LASER CUTTING

This machine will facilitate services for below stated metals & amp; dimensions;

Type of Metals:

Stainless Steel; Carbon Steel; Aluminium

Dimensions:

Round Tube, Square Tube and Rectangular Tube

Size of Round Tube:

Min. OD Size: Ø 20mm
Max OD Size: Ø 230mm
Circumscribed circle diameter ≤ 230mm

Size of Square Tube:

Min. Size: 20 x 20mm
Max. Size: 160 x 160mm

Size of Rectangular Tube:

170mm ≥ Rectangular tube side length ≥ 20mm
Circumscribed circle diameter ≤ 230 mm

Maximum length : 6.3 meters
Maximum Tube weight : 100 kgs
Positioning accuracy : 0.05mm
Repositioning accuracy : 0.03mm



LASER CUTTING

TRUMPF

Laser cutting is a technology that uses a laser to cut materials, and is typically used for industrial manufacturing applications : a laser is a device that generates an intense beam of coherent monochromatic light used in drilling and cutting, alignment and guidance.

Capabilities

Stainless Steel

Max. Thickness 15 mm
Max. Width 2000 mm
Max. Length 4000 mm

Aluminum

Max. Thickness 15 mm
Max. Width 2000 mm
Max. Length 4000 mm

Carbon Steel

Max. Thickness 18 mm
Max. Width 2000 mm
Max. Length 4000 mm

G.I Sheet

Max. Thickness 5 mm
Max. Width 2000 mm
Max. Length 4000 mm

Brass

Max. Thickness 06 mm
Max. Width 2000 mm
Max. Length 4000 mm

Copper

Max. Thickness 06 mm
Max. Width 2000 mm
Max. Length 4000 mm



CNC PUNCHING

Punch presses are developed for high flexibility and efficient processing of metal stampings. The main areas of application are for small and medium runs. This method is used where the application of lasers are inefficient or technically impractical. Punching is often the cheapest method for creating holes in sheet metal in medium to high production volumes. When a specially shaped punch is used to create multiple usable parts from a sheet material the process is known as blanking.

Capabilities

CNC Sheet to Sheet

Stainless Steel

Max. Thickness 03 mm
Max. Width 1500 mm
Max. Length 3000 mm

CNC Coil to Coil

Galvanized Iron

Max. Thickness 1.2 mm
Max. Width 1250 mm

Aluminum

Max. Thickness 1.2 mm
Max. Width 1250 mm

Stainless Steel

Max. Thickness 0.5 mm
Max. Width 1250 mm



COIL TO COIL PUNCHING

The most common method of perforating metal uses a rotary pinned perforation roller. This is a large cylinder with sharp, pointed needles on the outside to punch holes into the metal. As the sheet metal is run across the perforation roller, it rotates, continuously punching holes in the passing sheet. The needles on the roller, which can produce a wide variety of hole sizes, are sometimes heated to simultaneously melt the metal which forms a reinforced ring around the perforation.

Capabilities

Stainless Steel

| | |
|----------------|----------|
| Max. Thickness | 0.5 mm |
| Max. Width | 1250 mm |
| Hole | 325.4 mm |
| Pitch | 6-40 mm |
| Degree | 90/60 mm |

Galvanized Iron

| | |
|----------------|----------|
| Max. Thickness | 1.2 mm |
| Max. Width | 1250 mm |
| Hole | 325.4 mm |
| Pitch | 6-40 mm |
| Degree | 90/60 mm |

Aluminum

| | |
|----------------|----------|
| Max. Thickness | 1.5 mm |
| Max. Width | 1250 mm |
| Hole | 325.4 mm |
| Pitch | 6-40 mm |
| Degree | 90/60 mm |



COIL CUT TO LENGTH

A flat sheet of material is not actually produced by a mill as a flat sheet. In reality, a flat sheet of material starts its life as part of a coil of material. A Cut-To-Length machine will uncoil the material, level it, and then cut it to the required length and stack it. The end product produced by a Cut-To-Length machine is a flat sheet of material cut to a very precise length tolerance.

Capabilities

Stainless Steel

| | |
|-----------------|----------|
| Max. Thickness | 0.4-3 mm |
| Max. Width | 1500 mm |
| Max Coil Weight | 12000 mm |
| Max Length | 7000 mm |

Stainless Steel

| | |
|-----------------|-----------|
| Max. Thickness | 3 - 12 mm |
| Max. Width | 2000 mm |
| Max Coil Weight | 20000 mm |
| Max Length | 18000 mm |

Aluminum

| | |
|-----------------|----------|
| Max. Thickness | 0.4-3 mm |
| Max. Width | 1500 mm |
| Max Coil Weight | 5000 mm |
| Max Length | 6000 mm |



PLATE BENDING

We house the largest plate/ sheet bending machine in the Middle East. It is Robust, Accurate, Speedy, Flexible and easy operating

Capabilities

Stainless Steel

| | |
|----------------|---------|
| Max. Thickness | 14 mm |
| Max. Width | 1000 mm |
| Max. Length | 6000 mm |

Carbon Steel

| | |
|----------------|---------|
| Max. Thickness | 16 mm |
| Max. Width | 1000 mm |
| Max. Length | 6000 mm |

Carbon Steel

| | |
|----------------|---------|
| Max. Thickness | 16 mm |
| Max. Width | 1000 mm |
| Max. Length | 6000 mm |

G.I Sheet

| | |
|----------------|----------|
| Max. Thickness | 20 mm |
| Max. Width | 1000 mm |
| Max. Length | 12000 mm |



V GROOVING

Bending metal using a V-Grooving machine allows it to be folded to a tight radius, or sharp corner. This enables folded metal to mimic solid bar material at around a tenth of the cost and also avoids wastage. V-Grooved profiles look just like solid bar material but are light in weight and easier to transport and install. V-Grooving and folding creates minimum waste and is on average a tenth of the cost of working with solid bar metals. V-Grooving can be created not just in one shape of V. Wider V, semi-circular and square grooving is also possible allowing for a range of design variations.

Capabilities

Stainless Steel

| | |
|----------------|---------|
| Max. Thickness | 04 mm |
| Max. Width | 1220 mm |
| Max. Length | 4000 mm |

Carbon Steel

| | |
|----------------|---------|
| Max. Thickness | 4 mm |
| Max. Width | 1220 mm |
| Max. Length | 4000 mm |

G.I Sheet

| | |
|----------------|---------|
| Max. Thickness | 4 mm |
| Max. Width | 1220 mm |
| Max. Length | 4000 mm |



CNC LATHE

A lathe is a tool that rotates the work piece about an axis of rotation to perform various operations such as cutting, sanding, knurling, drilling, deformation, facing, turning, with tools that are applied to the work piece to create an object with symmetry about that axis. A chuck is a specialized type of clamp. It is used to hold an object with radial symmetry, especially a cylinder. On a lathe the chuck is mounted on the spindle which rotates.

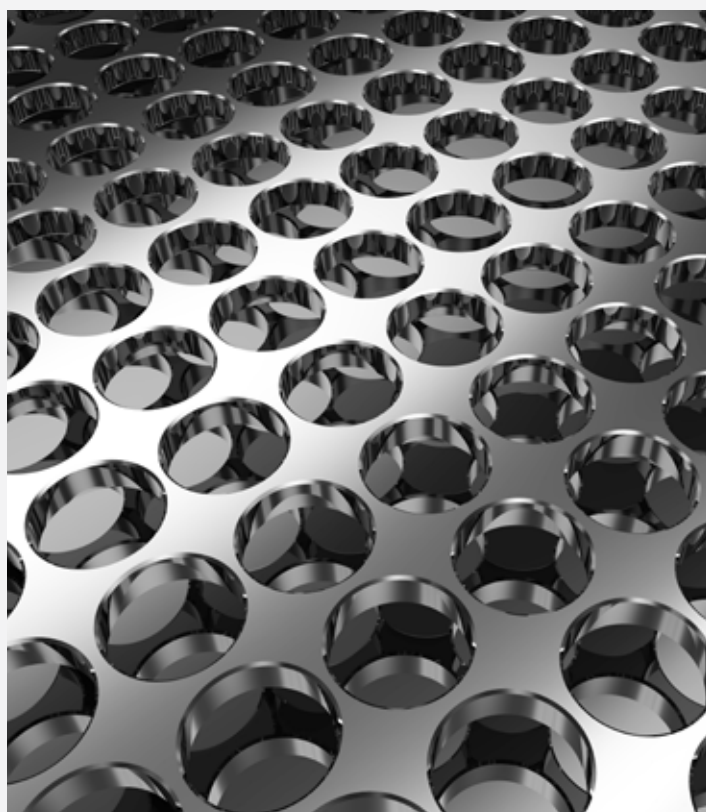
Capabilities

Machining

| | |
|----------------|---------------|
| Max. Thickness | 2000 mm |
| Chuk Diameter | 350 to 450 mm |

Turning of Various Components

| | |
|---------------|-------------|
| Chuk Diameter | 40 to 70 mm |
|---------------|-------------|



ELECTROPOLISHING

Also known as electrochemical polishing, anodic polishing or electrolytic polishing (especially in the metallography field), is an electrochemical process that removes material from a metallic work piece. It is used to polish, passivate, and deburr metal parts. It is often described as the reverse of electroplating. Further definition could refer to electro polishing as the process of smoothing and streamlining the surface of stainless steel up to 5-40microns by dipping the metal in electrolytic solution under electric.

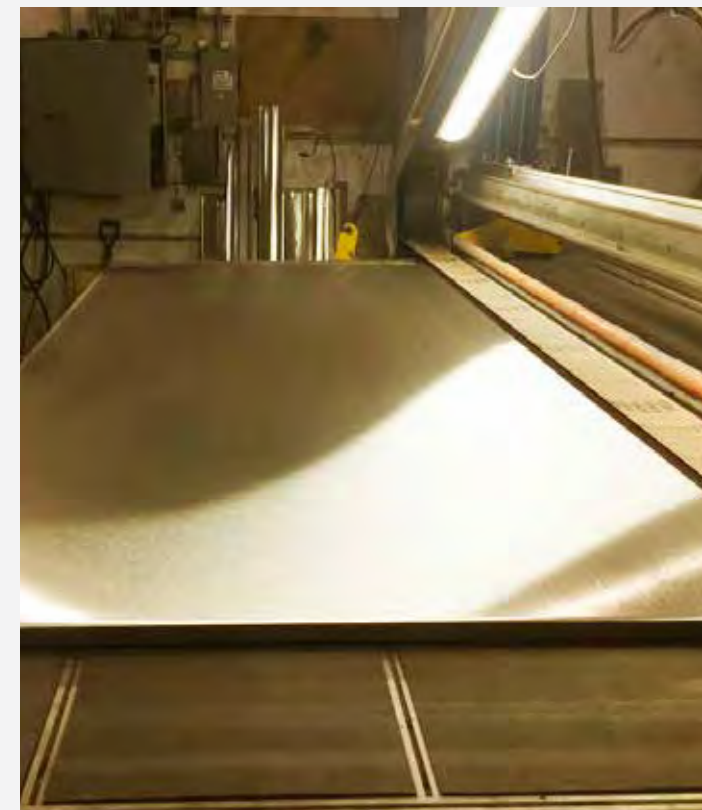
Capabilities

| Pipes | (upto 18" dia) | Pipes | (4" to 8") |
|---------|----------------|---------|------------|
| Length | 6000 mm | Length | 3000 mm |
| Surface | External | Surface | Internal |

Tank

| | |
|--------|---------|
| Length | 2900 mm |
| Width | 2500 mm |
| Height | 1200 mm |

Complete Services Catalogue available on request.



THICK PLATE POLISHING

We are one of the few metal service centres in the Gulf Region that are equipped to carry out the widest range of polishing of stainless steel products. One of our such favourite services include thick professional polishing of thick plate and fabricated products in Brush and Mirror finish.



SS PIPE POLISHING

Stainless steel Pipe polishing is loose abrasive process, used to generate surfaces with very high tolerances in geometry, surface integrity and roughness characteristics. This smoothness is obtained by rubbing the surface with the polishing particles with a rotating disc. Our sate of the art machinery carries out polishing of stainless steel tubes and pipes in Mirror and Brush finish up to 8 inch dia.

Complete Services Catalogue available on request.



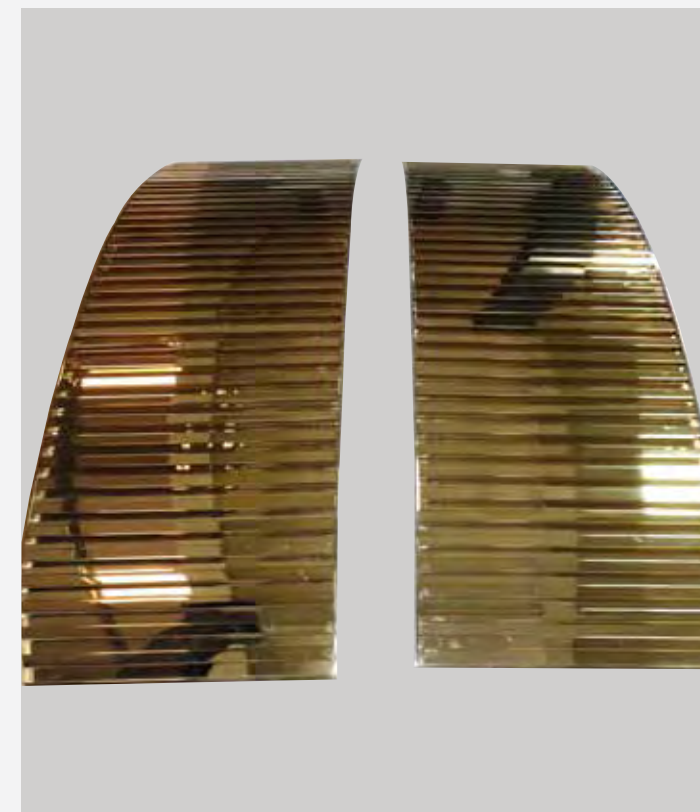
PICKLING

The thermal oxides from any heat treatment process and welding mainly Iron Oxides of various states, readily corrode and in almost every application, will contaminate product media in which they are in contact with. It is vital to remove these oxides to maintain the surface properties of stainless steel. Mechanical treatments can remove the bulk of these oxides, although these methods can smear the surface entrapping contaminants which may later release, causing failure to the function of the product. For example, if an abrasive wheel employed to remove the oxides, it can have the dual action of decontaminating and recontaminating the surface.



PASSIVATION

To ensure a fabrication or components corrosion resistance is optimized prior to delivery, it should undergo a passivation stage. Employing high oxidizing agents all surfaces are either sprayed or immersed in a solution which really oxidizes the Chromium. This rapidly forms the inert layer on the material and creates the critical surface property relied upon in service. Several methods of passivation are employed depending on the Alloy, pre-treatment and type of application. Both ISO 15730 and ASTM A967 Stainless Steel Passivation specification details each process in depth.



PVD COATING

Simply referred to as Physical vapor deposition (PVD) describes a variety of vacuum deposition methods which can be used to produce thin films and coatings. It is a vacuum coating process that produces a brilliant decorative and functional finish. We can achieve double color combination Advisable if whole requirement are done in one batch as different batch production can lead to color alteration.

Capabilities

Sheets

| | |
|----------------|-----------------|
| Max. Thickness | 5 mm |
| Width | 1200 to 1500 mm |
| Max. Length | 4000 mm |

Tubes

| | |
|----------------|-----------|
| Max. Thickness | upto 5 mm |
| Diameter | upto 4" |
| Max. Length | 3000 mm |



CNC SPINNING LATHE MACHINE

This machine will facilitate services for below stated metals & dimensions;

Type of Metals: Stainless Steel, Carbon Steel, Aluminium, Copper
 Max Thickness – Stainless Steel: 0.5 – 1.0mm
 Max Thickness – Aluminum & Copper: 0.5 – 2.0mm
 Max. Thickness – Carbon Steel: 0.5 – 2.0mm
 Max Product Diameter: 1000mm
 Max Product Length: 450mm
 Spinning Wheels: 4+1



EMBOSSING

Embossing is a metal forming process for producing raised or sunken designs or relief in sheet material by means of matched male and female roller dies, by passing sheet or a strip of metal between rolls of the desired pattern, theoretically with no change in metal thickness.

The lower the thickness of the sheet the more beautiful and efficient Embossing increase the strength of material
It makes the surface of the material scratch free.

Capabilities

Sheets

| | |
|------------|---------|
| Thickness | 1 mm |
| Max. Width | 1200 mm |



ETCHING

It is the processing of engraving (metal, glass, or stone) by coating it with a protective layer, drawing on it with a needle, and then covering it with acid to attack the parts the needle has exposed, especially in order to produce prints from it. – The acid corrodes or eat away the exposed (with Needle) parts. The etching process is known as biting. The waxy resist prevents the acid from biting the parts of the plate which have been covered. The longer the plate remains in the acid the deeper the “bites” become.

Capabilities

Sheets

| | |
|-------------|-------------|
| Thickness | 0.7 to 2 mm |
| Max. Width | 1200 mm |
| Max. Length | 4000 mm |



BEAD FINISH

Simply referred to as uniform matte finish of sheet surface with micro pits blasting is the operation of forcibly propelling a stream of abrasive material against a surface under high pressure to smooth a rough surface, roughen a smooth surface, shape a surface, or remove surface contaminants.



To whom it may concern

We hereby inform that Stainless Steel coils and sheets purchased by Hidayath Trading Co. LLC from Outokumpu is used in the manufacturing of Stainless Steel Pipes, Tubes and Profiles.

Thanking you

Best regards


Shekar Vanchi
 General Manager - UAE



Outokumpu Middle East FZCO
 JAFZA One AB 1007
 P.O.Box 262803
 Jebel Ali, Dubai, UAE
 Tel. +971 4 88 55 66 1
 Fax +971 4 88 55 66 2
www.outokumpu.com

Aperam Stainless Services & Solutions International



TO WHOM IT MAY CONCERN

Hidayath Group is one of the biggest and elite buyer for Aperam mills in the MENA region buying stainless steel sheets, coils, plates from

APERAM STAINLESS EUROPE
 SWINNENWIJWEG 5
 GENK ZUID, ZONE 6A
 B-3600 GENK, BELGIUM

and

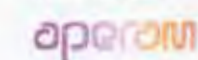
APERAM INOX AMERICA DO SUL S.A
 AV CARANDAI, 1115 -24 ANDAR
 30130-915 BELO HORIZONTE – MG
 BRAZIL

Thanking you,

Best regards,



S. Banerjee | Authorized Signatory




Aperam Stainless Services & Solutions International

Dubai Airport Free Zone
 Office : 5W A 613
 P.O Box : 54326
 Dubai, U.A.E

T +971 4 2146915 / F +971 4 2146916

shubhatosh.banerjee@aperam.com | www.aperam.com

Aperam Stainless Services &
 Solutions International (Branch)
 Building 5W-A, Office 613
 Dubai, U.A.E

T +00971 (04) 2146 915
 F +00971 (04) 2146 916
www.aperam.com



ACERINOX EUROPA, S.A.U.

Avenida Acerinox Europa, s/n
Polig. Ind. de Palmones
Los Barrios, 11379, Cádiz, Spain
Tlf. (34-1)-398-51.00/01/02
Fax. (34-1)-398.51.92/97

Hidayat Group
P.O. Box 13650, Phase II
Dubai Investment Park, Dubai, U.A.E.
Tlf. +971 4 885 7700
Fax. +971 4 885 7070

NUESTRA REF.
(Cítese al contestar)

SU REF.

TO WHOM IT MAY CONCERN

HIDAYAT GROUP is one of the esteem & elite customers in the MENA Region and they have been purchasing our stainless steel material for many years.

HIDAYAT GROUP is nowadays one the biggest buyers for ACERINOX mills in the MENA Region.



Acerinox Europa, S.A.U.
Commercial Director
Daniel Tomás Azpitarte Zemp



ACERINOX EUROPA, S.A.U.



Acerinox Europa, S.A.U.
Deputy Commercial Director
Emilio Díaz-Urgorri Emparanza

BEYOND TODAY INTO TOMORROW



VIRAJ
VIRAJ PROFILES LIMITED

TO WHOMSOEVER IT MAY CONCERN

HIDAYATH GROUP is one of the esteem & elite customer in the Middle East region and they are stocking our stainless steel material from last 15 years

Signed and Stamped





Corporate Office:
Viraj Tower, 1st Floor, Junction of Andheri Kurla Road,
Western Express Highway, Near Land Mark Building,
Andheri (East), Mumbai - 400069, India
Tel.: +91 22 3006 4000/9, Fax: +91 22 3006 4050
Website: www.viraj.com

Registered & Marketing Office:
G-34, MIDC Tarapur Industrial Area, Boisar, Taluka-
Palghar, Dist. Palghar, Maharashtra - 401 506, India
Tel.: +91 904 999 1021-28
Fax: +91 (2825) 260 159 / 274 420
Video Conferencing: IP-124.30.38.221

Manufacturing of Stainless Steel: VIRAJ, JISCO, JASTRON, JASTRON, JASTRON, JASTRON, JASTRON

CIN NO. - U28113MH1996PLC098835



No.270, Sec.4, Jungshan Rd., Shijou Shiang, Chang-Hwa, Taiwan
 TEL : +886-4-8899666 FAX : +886-4-8899770
 http://www.ycinox.com E-mail : yc@ycinox.com



TO WHOM IT MAY BE CONCERNED,

We certify that HIDAYATH GROUP is buying material regularly from YC INOX Taiwan for many years. HIDAYATH GROUP is one of the major & elite buyers for YC Inox in the U.A.E. region

We further certify whatever stated therein is true and correct.

YOURS SINCERELY

YC INOX CO., LTD

YC INOX CO., LTD.

No 270, Sec. 4, Jungshan Rd, Shijou Shiang,
 Chang-Hwa, Taiwan

Tel:886-4-8899666 Fax:886-4-8899770



3-10, SHI JOU LIAU, CHIN SHUEI LI, YENSHUI DIST., TAINAN CITY, TAIWAN, R.O.C.

TEL: 886-6-6520911 FAX : 886-6-6520931 <http://www.walsin.com>

TO WHOM IT MAY CONCERN

“HIDAYATH GROUP is one of the biggest & elite buyer for WALSIN TAIWAN in the MENA region and they are stocking our stainless steel material for many years”.

WALSIN LIHWA CORP. YENSHUI PLANT
 NO.3-10, SHI JOU LIAU, CHIN SHUEI LI, YENSHUI DIST.,
 TAINAN CITY, 73743, TAIWAN, R.O.C.

WALSIN LIHWA CORP.

YENSHUI PLANT : 3-10, SHI JOU LIAU, CHIN SHUEI LI, YENSHUI DIST.,

TAINAN CITY, TAIWAN, R.O.C.



Saudi Arabia Network

Riyadh

SAUDI HIDAYATH CO.
EXIT-17, MADINA
MUNAWARA ROAD RIYADH,
SAUDI ARABIA
Mob : +966 11 2958190
Email : riyadh@hidayath.com

Jeddah,

HASNAIN TAHIR STREET –
AL MARWA DISTRICT JEDDAH,
SAUDI ARABIA
Mob : +966 12 6550561
Email : jeddah@hidayath.com

Dammam

SAUDI HIDAYATH COMPANY Al Khodaryah,
Dahahran Jubali Branch
Road, Near Mitwalli Steel Dammam
Kingdom of Saudi Arabia
Mob : 0532110245, 0555443814
Email : dammam@hidayath.com



**HIDAYATH
METAL INDUSTRY**

STREET #254, 2nd INDUSTRIAL CITY (MODON)
AL KHARJ ROAD, RIYADH, SAUDI ARABIA
Mob : +966 11 4998800
Email : saudi@hidayath.com